



Innovate
Multi Academy Trust

Safeguarding Policy including Child Protection Policy and Procedures

2023-24

Approved by: K Falvey

Date: Sept 2023

Next review due by: Sept 2024

Updated by HF, based on a template policy produced by The Key

Named Staff and Initial Contacts

NB: Where 'school leader' is used in this document, it refers to the Headteacher or Head of School.

	Badby	Kilsby	Paulerspury	Rothersthorpe	Weedon Bec	Woodford Halse
Designated Safeguarding Lead	Ben Edge	Georgina Sensecall	Robin Bunting	Nicola Fountain	Jo Hatt	Alison Crockford
Deputy Designated Safeguarding Lead/s	Zoe Reed Lucy Starmar	Kim Seeney Kara Kelly	Julie Herlihy	Nikki Henry-Moore Amanda Cordell-Edwards	Emma Saunders	Victoria Rodhouse
Other Deputies	Heather Ryan Sophie Carroll					Laura Mooney
Across the trust	Zoe Massingham and Esther Fawcett					
Nominated Safeguarding Governor	Tim Alexander	Helen Holmes	Paul Dunstan	Abi Ewan	Chris Hancock	Terry Lifford / Pat Conlon

Safeguarding, advice and training contacts: NCC

Safeguarding Referrals must be made in one of the following ways:

- By telephone contact to the Multi-Agency Safeguarding Hub: **0300 126 7000** (option one);
- In an emergency outside office hours, by contacting the Emergency Duty Team (01604 626938) or the Police.
- If a child is in immediate danger at any time, left alone or missing, you should contact the police directly and/or an ambulance using 999.

Multi-Agency Safeguarding Hub (M.A.S.H)

The Multi-Agency Safeguarding Hub (MASH) deals with referrals from professionals and members of the public who may have concerns about a child's welfare following contact with the helpline that is now also based in the Multi-Agency Safeguarding Hub. It makes the process of dealing with referrals quicker and more effective by improving the way county council: Children's social care, Northamptonshire Fire and Rescue Service (NFRS), Youth Offending Service (YOS) and education, work alongside other partner agency colleagues including Northamptonshire police, Northamptonshire health partners, National Probation Service, and the East Midlands Ambulance Service (EMAS) to share information.

For referrals regarding adults in education: Designated Officer (formerly known as LADO)

01604 362993 ladorefferral@nctrust.co.uk or Andrew.Smith@NCTrust.co.uk

[Designated Officer \(formerly LADO\) - Northamptonshire Safeguarding Children Board](#)

1. Aims

The trust aims to ensure that:

- Appropriate action is taken in a timely manner to safeguard and promote children's welfare
- All staff are aware of their statutory responsibilities with respect to safeguarding
- Staff are properly trained in recognising and reporting safeguarding issues

2. Legislation and statutory guidance

This policy is based on the Department for Education's (DfE's) statutory guidance [Keeping Children Safe in Education \(2023\)](#) and [Working Together to Safeguard Children \(2018\)](#), and the [Governance Handbook](#). We comply with this guidance and the arrangements agreed and published by our 3 local safeguarding partners (see section 3).

This policy is also based on the following legislation:

- Part 3 of the schedule to the [Education \(Independent School Standards\) Regulations 2014](#), which places a duty on academies and independent schools to safeguard and promote the welfare of pupils at the school
- [The Children Act 1989](#) (and [2004 amendment](#)), which provides a framework for the care and protection of children
- Section 5B(11) of the Female Genital Mutilation Act 2003, as inserted by section 74 of the [Serious Crime Act 2015](#), which places a statutory duty on teachers to report to the police where they discover that female genital mutilation (FGM) appears to have been carried out on a girl under 18
- [Statutory guidance on FGM](#), which sets out responsibilities with regards to safeguarding and supporting girls affected by FGM
- [The Rehabilitation of Offenders Act 1974](#), which outlines when people with criminal convictions can work with children
- Schedule 4 of the [Safeguarding Vulnerable Groups Act 2006](#), which defines what 'regulated activity' is in relation to children
- [Statutory guidance on the Prevent duty](#), which explains schools' duties under the Counter-Terrorism and Security Act 2015 with respect to protecting people from the risk of radicalisation and extremism
- [The Human Rights Act 1998](#), which explains that being subjected to harassment, violence and/or abuse, including that of a sexual nature, may breach any or all of the rights which apply to individuals under the [European Convention on Human Rights](#) (ECHR)
- [The Equality Act 2010](#), which makes it unlawful to discriminate against people regarding particular protected characteristics (including disability, sex, sexual orientation, gender reassignment and race). This means our governors and school leaders should carefully consider how they are supporting their pupils with regard to these characteristics. The Act allows our school to take positive action to deal with particular disadvantages affecting pupils (where we can show it's proportionate). This includes making reasonable adjustments for disabled pupils. For example, it could include taking positive action to support girls where there's evidence that they're being disproportionately subjected to sexual violence or harassment
- [The Public Sector Equality Duty \(PSED\)](#), which explains that we must have due regard to eliminating unlawful discrimination, harassment and victimisation. The PSED helps us to focus on key issues of concern and how to improve pupil outcomes. Some pupils may be more at risk of harm from issues such as sexual violence; homophobic, biphobic or transphobic bullying; or racial discrimination

- The [Childcare \(Disqualification\) and Childcare \(Early Years Provision Free of Charge\) \(Extended Entitlement\) \(Amendment\) Regulations 2018](#) (referred to in this policy as the “2018 Childcare Disqualification Regulations”) and [Childcare Act 2006](#), which set out who is disqualified from working with children
- This policy also meets requirements relating to safeguarding and welfare in the [statutory framework for the Early Years Foundation Stage](#)
- This policy also complies with our funding agreement and articles of association.

3. Definitions

Safeguarding and promoting the welfare of children means:

- Protecting children from maltreatment
- Preventing impairment of children’s mental and physical health or development
- Ensuring that children grow up in circumstances consistent with the provision of safe and effective care
- Taking action to enable all children to have the best outcomes

Child protection is part of this definition and refers to activities undertaken to prevent children suffering, or being likely to suffer, significant harm.

Abuse is a form of maltreatment of a child, and may involve inflicting harm or failing to act to prevent harm. Appendix 1 explains the different types of abuse.

Neglect is a form of abuse and is the persistent failure to meet a child’s basic physical and/or psychological needs, likely to result in the serious impairment of the child’s health or development. Appendix 1 defines neglect in more detail.

Sharing of nudes and semi-nudes (also known as sexting or youth-produced sexual imagery) is where children share nude or semi-nude images, videos or live streams.

Children includes everyone under the age of 18.

The following 3 **safeguarding partners** are identified in Keeping Children Safe in Education (and defined in the Children Act 2004, as amended by chapter 2 of the Children and Social Work Act 2017). They will make arrangements to work together to safeguard and promote the welfare of local children, including identifying and responding to their needs:

- The local authority (LA)
- Integrated care boards (previously known as clinical commissioning groups) for an area within the LA
- The chief officer of police for a police area in the LA area

Victim is a widely understood and recognised term, but we understand that not everyone who has been subjected to abuse considers themselves a victim, or would want to be described that way. When managing an incident, we will be prepared to use any term that the child involved feels most comfortable with.

Alleged perpetrator(s) and **perpetrator(s)** are widely used and recognised terms. However, we will think carefully about what terminology we use (especially in front of children) as, in some cases, abusive behaviour can be harmful to the perpetrator too. We will decide what’s appropriate and which terms to use on a case-by-case basis.

4. Equality statement

Some children have an increased risk of abuse, both online and offline, and additional barriers can exist for some children with respect to recognising or disclosing it. We are committed to anti-discriminatory practice and recognise children's diverse circumstances. We ensure that all children have the same protection, regardless of any barriers they may face.

We give special consideration to children who:

- Have special educational needs and/or disabilities (SEND) or health conditions (see section 10)
- Are young carers
- May experience discrimination due to their race, ethnicity, religion, gender identification or sexuality
- Have English as an additional language
- Are known to be living in difficult situations – for example, temporary accommodation or where there are issues such as substance abuse or domestic violence
- Are at risk of FGM, sexual exploitation, forced marriage, or radicalisation
- Are asylum seekers
- Are at risk due to either their own or a family member's mental health needs
- Are looked after or previously looked after (see section 12)
- Are missing or absent from education for prolonged periods and/or repeat occasions
- Whose parent/carers has expressed an intention to remove them from school to be home educated

5. Roles and responsibilities

Safeguarding and child protection is **everyone's** responsibility. This policy applies to all staff, volunteers and governors in the school and is consistent with the procedures of the 3 safeguarding partners. Our policy and procedures also apply to extended school and off-site activities.

The school plays a crucial role in preventative education. This is in the context of a whole-school approach to preparing pupils for life in modern Britain, and a culture of zero tolerance of sexism, misogyny/misandry, homophobia, biphobia, transphobia and sexual violence/harassment. This will be underpinned by our:

- Behaviour policy
- Pastoral support system
- Planned programme of Relationships, Sex and Health Education (RSHE), which is inclusive and delivered regularly, tackling issues such as:
 - Healthy and respectful relationships
 - Boundaries and consent
 - Stereotyping, prejudice and equality
 - Body confidence and self-esteem
 - How to recognise an abusive relationship (including coercive and controlling behaviour)
 - The concepts of, and laws relating to, sexual consent, sexual exploitation, abuse, grooming, coercion, harassment, rape, domestic abuse, so-called honour-based violence such as forced marriage and FGM and how to access support
 - What constitutes sexual harassment and sexual violence and why they're always unacceptable

5.1 All staff

All staff will:

- Read and understand part 1 and annex B of the Department for Education's statutory safeguarding guidance, [Keeping Children Safe in Education](#), and review this guidance at least annually
- Sign a declaration at the beginning of each academic year to say that they have reviewed the guidance
- Reinforce the importance of online safety when communicating with parents and carers. This includes making parents and carers aware of what we ask children to do online (e.g. sites they need to visit or who they'll be interacting with online)
- Provide a safe space for pupils who are LGBTQ+ to speak out and share their concerns

All staff will be aware of:

- Our systems which support safeguarding, including this child protection and safeguarding policy, the staff code of conduct, the role and identity of the designated safeguarding lead (DSL) and deputies, the behaviour policy, the online safety policy, and the safeguarding response to children who go missing from education
- The early help assessment process (sometimes known as the common assessment framework) and their role in it, including identifying emerging problems, liaising with the DSL, and sharing information with other professionals to support early identification and assessment
- The process for making referrals to local authority children's social care and for statutory assessments that may follow a referral, including the role they might be expected to play
- What to do if they identify a safeguarding issue or a child tells them they are being abused or neglected, including specific issues such as FGM, and how to maintain an appropriate level of confidentiality while liaising with relevant professionals
- The signs of different types of abuse and neglect, as well as specific safeguarding issues, such as child-on-child abuse, child sexual exploitation (CSE), child criminal exploitation (CCE), indicators of being at risk from or involved with serious violent crime, FGM, radicalisation and serious violence (including that linked to county lines)
- The importance of reassuring victims that they are being taken seriously and that they will be supported and kept safe
- The fact that children can be at risk of harm inside and outside of their home, at school and online
- The fact that children who are (or who are perceived to be) lesbian, gay, bi or trans (LGBTQ+) can be targeted by other children
- What to look for to identify children who need help or protection

Section 15 outlines in more detail how staff are supported to do this.

5.2 The designated safeguarding lead (DSL)

Each school has its own DSL, outlined in the table on the first page. The DSLs' responsibilities include online safety, and understanding our filtering and monitoring processes on school devices and school networks to keep pupils safe online.

During term time, the DSLs will be available during school hours for staff to discuss any safeguarding

When the DSL is absent, the deputies will act as cover.

The DSLs will be given the time, funding, training, resources and support to:

- Provide advice and support to other staff on child welfare and child protection matters
- Take part in strategy discussions and inter-agency meetings and/or support other staff to do so
- Contribute to the assessment of children
- Refer suspected cases, as appropriate, to the relevant body (local authority children's social care, Channel programme, Disclosure and Barring Service, and/or police), and support staff who make such referrals directly
- Have a good understanding of harmful sexual behaviour
- Have a good understanding of the filtering and monitoring systems and processes in place at our school

The DSLs will also:

- Keep the school leader informed of any issues
- Liaise with local authority case managers and designated officers for child protection concerns as appropriate
- Discuss the local response to sexual violence and sexual harassment with police and local authority children's social care colleagues to prepare the school's policies
- Be confident that they know what local specialist support is available to support all children involved (including victims and alleged perpetrators) in sexual violence and sexual harassment, and be confident as to how to access this support
- Be aware that children must have an 'appropriate adult' to support and help them in the case of a police investigation or search

The full responsibilities of the DSL and deputies are set out in their job description.

5.3 The Board of Directors and Local Governing Boards (LGB)

The board will:

- Facilitate a whole-school approach to safeguarding, ensuring that safeguarding and child protection are at the forefront of, and underpin, all relevant aspects of process and policy development
- Evaluate and approve this policy at each review, ensuring it complies with the law, and hold the school leader to account for its implementation
- Be aware of its obligations under the Human Rights Act 1998, the Equality Act 2010 (including the Public Sector Equality Duty), and our school's local multi-agency safeguarding arrangements
- Appoint a senior board level (or equivalent) lead to monitor the effectiveness of this policy in conjunction with the full governing board. This is always a different person from the DSL
- Ensure all staff undergo safeguarding and child protection training, including online safety, and that such training is regularly updated and is in line with advice from the safeguarding partners
- Ensure that the school has appropriate filtering and monitoring systems in place, and review their effectiveness. This includes:
 - Making sure that the leadership team and staff are aware of the provisions in place, and that they understand their expectations, roles and responsibilities around filtering and monitoring as part of safeguarding training
 - Reviewing the [DfE's filtering and monitoring standards](#), and discussing with IT staff and service providers what needs to be done to support the school in meeting these standards
- Make sure:

- The DSL has the appropriate status and authority to carry out their job, including additional time, funding, training, resources and support
- Online safety is a running and interrelated theme within the whole-school approach to safeguarding and related policies
- The DSL has lead authority for safeguarding, including online safety and understanding the filtering and monitoring systems and processes in place
- The school has procedures to manage any safeguarding concerns (no matter how small) or allegations that do not meet the harm threshold (low-level concerns) about staff members (including supply staff, volunteers and contractors). Please visit the [trust website](#) to read our full policy.
- That this policy reflects that children with SEND, or certain medical or physical health conditions, can face additional barriers to any abuse or neglect being recognised where another body is providing services or activities (regardless of whether or not the children who attend these services/activities are children on the school roll):
 - Seek assurance that the other body has appropriate safeguarding and child protection policies/procedures in place, and inspect them if needed
 - Make sure there are arrangements for the body to liaise with the school about safeguarding arrangements, where appropriate
 - Make sure that safeguarding requirements are a condition of using the school premises, and that any agreement to use the premises would be terminated if the other body fails to comply

The chair of governors will act as the 'case manager' in the event that an allegation of abuse is made against the school leader, where appropriate (please see the [trust website](#) to read our full policy regarding allegations made against members of staff).

All directors and governors will read Keeping Children Safe in Education in its entirety.

Section 15 of this policy has information on how governors are supported to fulfil their role.

5.4 The School Leader

The school leader is responsible for the implementation of this policy within schools, including:

- Ensuring that staff (including temporary staff) and volunteers:
 - Are informed of our systems which support safeguarding, including this policy, as part of their induction
 - Understand and follow the procedures included in this policy, particularly those concerning referrals of cases of suspected abuse and neglect
- Communicating this policy to parents/carers when their child joins the school and via the school website
- Ensuring that the DSL has appropriate time, funding, training and resources, and that there is always adequate cover if the DSL is absent
- Acting as the 'case manager' in the event of an allegation of abuse made against another member of staff or volunteer, where appropriate (see appendix 3)
- Making decisions regarding all low-level concerns, though they may wish to collaborate with the DSL on this
- Ensuring the relevant staffing ratios are met, where applicable
- Making sure each child in the Early Years Foundation Stage is assigned a key person
- Overseeing the safe use of technology, mobile phones and cameras in Early Years settings

5.5 Virtual school heads

Virtual school heads have a non-statutory responsibility for the strategic oversight of the educational attendance, attainment and progress of pupils with a social worker.

They should also identify and engage with key professionals, e.g. DSLs, special educational needs co-ordinators (SENCOs), social workers, mental health leads and others.

6. Confidentiality

Safeguarding children raises issues of confidentiality that must be clearly understood by all staff/volunteers in schools. Staff should note the following:

- Timely information sharing is essential to effective safeguarding.
- All staff in schools, both teaching and non-teaching staff, have a responsibility to share relevant information about the protection of children with other professionals, particularly the investigative agencies (children's services and the police).
- Staff/volunteers who receive information about children and their families in the course of their work should share that information only within appropriate professional contexts.
- Fears about sharing information must not be allowed to stand in the way of the need to promote the welfare, and protect the safety, of children.
- The Data Protection Act (DPA) 2018 and UK GDPR do not prevent, or limit, the sharing of information for the purposes of keeping children safe.
- If staff need to share 'special category personal data', the DPA 2018 contains 'safeguarding of children and individuals at risk' as a processing condition that allows practitioners to share information without consent if: it is not possible to gain consent; it cannot be reasonably expected that a practitioner gains consent; or if to gain consent would place a child at risk.
- Staff should never promise a child that they will not tell anyone about a report of abuse, as this may not be in the child's best interests. Instead, it is important that the member of staff/volunteer tell the child in a manner appropriate to the child's age/stage of development that they cannot promise complete confidentiality – they must explain that they may need to pass information to other professionals to help keep the child or other children safe.
- The DSL should consider that:
 - Parents or carers should normally be informed (unless this would put the victim at greater risk)
 - The basic safeguarding principle is: if a child is at risk of harm, is in immediate danger, or has been harmed, a referral should be made to local authority children's social care

Regarding anonymity, all staff will:

- Be aware of anonymity, witness support and the criminal process in general where an allegation of sexual violence or sexual harassment is progressing through the criminal justice system
- Do all they reasonably can to protect the anonymity of any children involved in any report of sexual violence or sexual harassment, for example, carefully considering which staff should know about the report, and any support for children involved
- Consider the potential impact of social media in facilitating the spreading of rumours and exposing victims' identities

The government's [information sharing advice for safeguarding practitioners](#) includes 7 'golden rules' for sharing information, and will support staff who have to make decisions about sharing information

If staff are in any doubt about sharing information, they should speak to the DSL (or deputy)

Confidentiality is also addressed in this policy with respect to record-keeping in section 14.

7. Recognising abuse and taking action

Staff, volunteers and governors must follow the procedures set out below in the event of a safeguarding issue.

Please note – in this and subsequent sections, you should take any references to the DSL to mean “the DSL (or deputy DSL)”.

7.1 If a child is suffering or likely to suffer harm, or in immediate danger

Make a referral to children’s social care and/or the police **immediately** if you believe a child is suffering or likely to suffer from harm, or is in immediate danger. **Anyone can make a referral.**

Tell the DSL (see section 5.2) as soon as possible if you make a referral directly.

Refer all cases of suspected abuse or neglect to the Multi Agency Safeguarding Hub (MASH), Police (cases where a crime may have been committed) and to the Channel programme where there is a radicalisation concern. **Safeguarding Referrals can be made in one of the following ways:**

- by telephone contact to the Multi-Agency Safeguarding Hub (MASH): **0300 126 7000** (option one)
- by using the online referral form found at [Report a concern - Help and protection for children](#)

7.2 If a child makes a disclosure to you

If a child discloses a safeguarding issue to you, you should:

- Listen to and believe them. Allow them time to talk freely and do not ask leading questions
- Stay calm and do not show that you are shocked or upset
- Tell the child they have done the right thing in telling you. Do not tell them they should have told you sooner
- Explain what will happen next and that you will have to pass this information on. Do not promise to keep it a secret
- Write up your conversation as soon as possible in the child’s own words. Stick to the facts, and do not put your own judgement on it
- Sign and date the write-up and pass it on to the DSL. Alternatively, if appropriate, make a referral to children’s social care and/or the police directly (see 7.1), and tell the DSL as soon as possible that you have done so. Aside from these people, do not disclose the information to anyone else unless told to do so by a relevant authority involved in the safeguarding process

Bear in mind that some children may:

- Not feel ready, or know how to tell someone that they are being abused, exploited or neglected
- Not recognise their experiences as harmful
- Feel embarrassed, humiliated or threatened. This could be due to their vulnerability, disability, sexual orientation and/or language barriers

None of this should stop you from having a ‘professional curiosity’ and speaking to the DSL if you have concerns about a child.

7.3 If you discover that FGM has taken place or a pupil is at risk of FGM

Keeping Children Safe in Education explains that FGM comprises “all procedures involving partial or total removal of the external female genitalia, or other injury to the female genital organs”.

FGM is illegal in the UK and a form of child abuse with long-lasting, harmful consequences. It is also known as ‘female genital cutting’, ‘circumcision’ or ‘initiation’.

Possible indicators that a pupil has already been subjected to FGM, and factors that suggest a pupil may be at risk, are set out in appendix 2 of this policy.

Any teacher who either:

- Is informed by a girl under 18 that an act of FGM has been carried out on her; or
- Observes physical signs which appear to show that an act of FGM has been carried out on a girl under 18 and they have no reason to believe that the act was necessary for the girl’s physical or mental health or for purposes connected with labour or birth

Must immediately report this to the police, personally. **This is a mandatory statutory duty, and teachers will face disciplinary sanctions for failing to meet it.**

Unless they have been specifically told not to disclose, they should also discuss the case with the DSL and involve children’s social care as appropriate.

Any other member of staff who discovers that an act of FGM appears to have been carried out on a **pupil under 18** must speak to the DSL and follow our local safeguarding procedures.

The duty for teachers mentioned above does not apply in cases where a pupil is *at risk* of FGM or FGM is suspected but is not known to have been carried out. Staff should not examine pupils.

Any member of staff who suspects a pupil is *at risk* of FGM or suspects that FGM has been carried out should speak to the DSL and follow our local safeguarding procedures.

7.4 If you have concerns about a child (as opposed to believing a child is suffering or likely to suffer from harm, or is in immediate danger)

Figure 1 below, before section 7.7, illustrates the procedure to follow if you have any concerns about a child’s welfare.

Where possible, speak to the DSL first to agree a course of action.

If in exceptional circumstances the DSL is not available, this should not delay appropriate action being taken. Speak to a member of the senior leadership team and/or take advice from local authority children’s social care. You can also seek advice at any time from the NSPCC helpline on 0808 800 5000. Share details of any actions you take with the DSL as soon as practically possible.

Make a referral to local authority children’s social care directly, if appropriate (see ‘Referral’ below). Share any action taken with the DSL as soon as possible.

Early help assessment

If an early help assessment is appropriate, the DSL will generally lead on liaising with other agencies and setting up an inter-agency assessment as appropriate. Staff may be required to support other agencies and professionals in an early help assessment, in some cases acting as the lead practitioner.

We will discuss and agree, with statutory safeguarding partners, levels for the different types of assessment, as part of local arrangements.

The DSL will keep the case under constant review and the school will consider a referral to local authority children's social care if the situation does not seem to be improving. Timelines of interventions will be monitored and reviewed.

Early Help Links:

- www.northamptonshirescb.org.uk/social-care/early-help/ to access Northamptonshire's information and support for professionals regarding Early Help.

The Early Help Strategy:

- www.northamptonshirescb.org.uk/social-care/early-help/early-help-strategy/

Early Help Coordinator:

- www.northamptonshire.gov.uk/earlyhelp

Referral

If it is appropriate to refer the case to local authority children's social care or the police, the DSL will make the referral or support you to do so.

If you make a referral directly (see section 7.1), you must tell the DSL as soon as possible.

The local authority will make a decision within 1 working day of a referral about what course of action to take and will let the person who made the referral know the outcome. The DSL or person who made the referral must follow up with the local authority if this information is not made available, and ensure outcomes are properly recorded.

If the child's situation does not seem to be improving after the referral, the DSL or person who made the referral must follow local escalation procedures to ensure their concerns have been addressed and that the child's situation improves.

Contact details for safeguarding referrals are set out on the first page of this policy.

7.5 If you have concerns about extremism

If a child is not suffering or likely to suffer from harm, or in immediate danger, where possible speak to the DSL first to agree a course of action.

If in exceptional circumstances the DSL is not available, this should not delay appropriate action being taken. Speak to a member of the senior leadership team and/or seek advice from local authority children's social care. Make a referral to local authority children's social care directly, if appropriate (see 'Referral' above). Inform the DSL or deputy as soon as practically possible after the referral.

Where there is a concern, the DSL will consider the level of risk and decide which agency to make a referral to. This could include [Channel](#), the government's programme for identifying and supporting individuals at risk of being drawn into terrorism, or the local authority children's social care team.

The DfE also has a dedicated telephone helpline, 020 7340 7264, which school staff and governors can call to raise concerns about extremism with respect to a pupil. You can also email counter.extremism@education.gov.uk. Note that this is not for use in emergency situations.

In an emergency, call 999 or the confidential anti-terrorist hotline on 0800 789 321 if you:

- Think someone is in immediate danger
- Think someone may be planning to travel to join an extremist group
- See or hear something that may be terrorist-related

7.6 If you have a concern about mental health

Mental health problems can, in some cases, be an indicator that a child has suffered or is at risk of suffering abuse, neglect or exploitation.

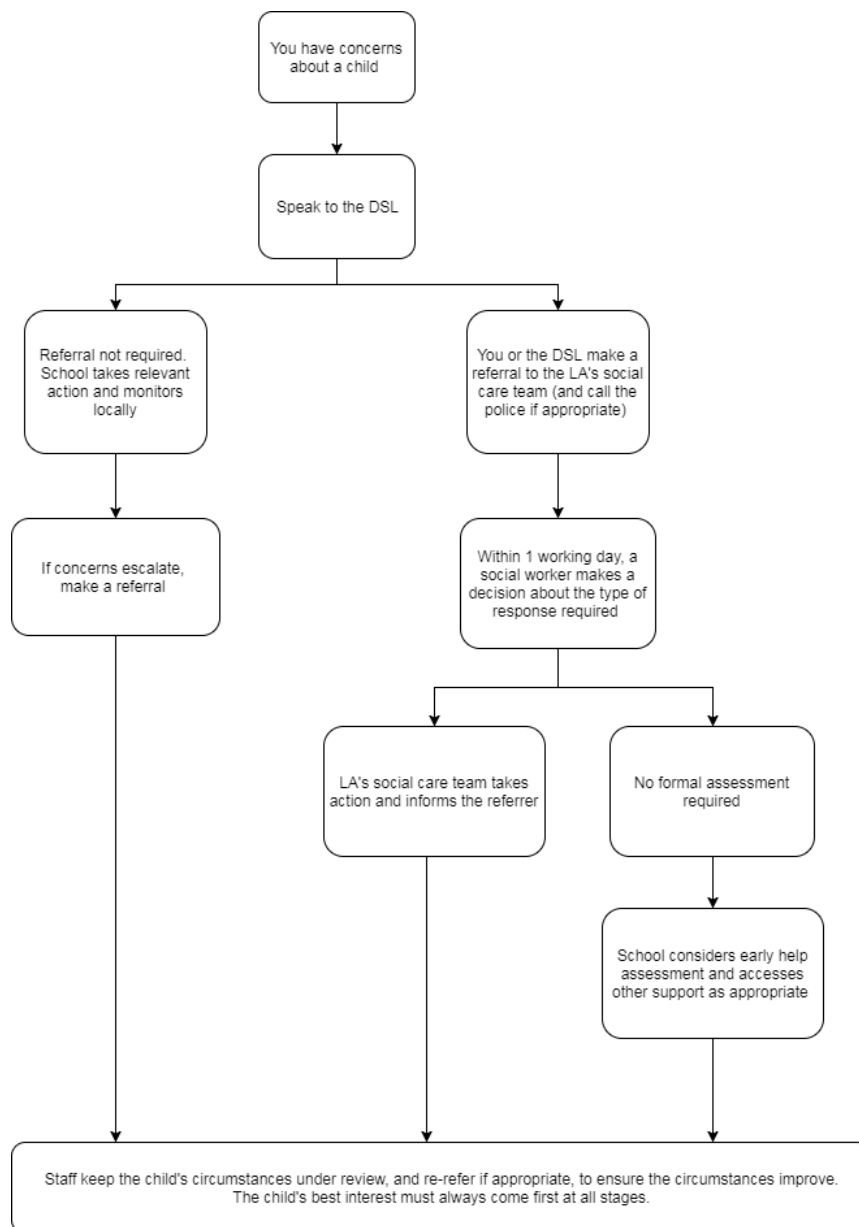
Staff will be alert to behavioural signs that suggest a child may be experiencing a mental health problem or be at risk of developing one.

If you have a mental health concern about a child that is also a safeguarding concern, take immediate action by following the steps in section 7.4.

If you have a mental health concern that is not also a safeguarding concern, speak to the DSL to agree a course of action. Schools have individual pupil wellbeing policies which can be consulted for further guidance.

Figure 1: procedure if you have concerns about a child's welfare (as opposed to believing a child is suffering or likely to suffer from harm, or in immediate danger)

(Note – if the DSL is unavailable, this should not delay action. See section 7.4 for what to do.)



7.7 Concerns about a staff member, supply teacher, volunteer or contractor

If you have concerns about a member of staff (including a supply teacher, volunteer or contractor), or an allegation is made about a member of staff (including a supply teacher, volunteer or contractor) posing a risk of harm to children, speak to the school leader as soon as possible. Where there are concerns about the school leader, this should be referred to the trust CEO or school chair of governors as appropriate. These are:

CEO	Lindsey Evans					
	Badby	Kilsby	Paulerspury	Rothersthorpe	Weedon Bec	Woodford Halse
Chair of Governors	Tim Alexander	Tom Romecin	Paul Dunstan	Fiona Newitt	Chris Hancock	Terry Lifford
Vice Chair of Governors		Helen Holmes	Suzanne Mortimer	Shayne Major	Paul Thompson	Pat Conlon

The school leader/chair of governors will then follow the procedures set out in our statement of procedures for dealing with allegations of abuse which can be read in full on the [trust website](#).

Where you believe there is a conflict of interest in reporting a concern or allegation about a member of staff (including a supply teacher, volunteer or contractor) to the school leader, report it directly to the local authority designated officer (LADO).

If you receive an allegation relating to an incident where an individual or organisation was using the school premises for running an activity for children, follow our school safeguarding policies and procedures, informing the LADO, as you would with any safeguarding allegation.

Multi-Agency Safeguarding Hub: **0300 126 7000 (Option 1)**

Designated Officers (formerly LADO):

01604 362993

ladoreferral@nctrust.co.uk

7.8 Allegations of abuse made against other pupils

We recognise that children are capable of abusing their peers. Abuse will never be tolerated or passed off as “banter”, “just having a laugh” or “part of growing up”, as this can lead to a culture of unacceptable behaviours and an unsafe environment for pupils.

We also recognise the gendered nature of child-on-child abuse. However, all child-on-child abuse is unacceptable and will be taken seriously.

Most cases of pupils hurting other pupils will be dealt with under our school’s behaviour policy, but this child protection and safeguarding policy will apply to any allegations that raise safeguarding concerns. This might include where the alleged behaviour:

- Is serious, and potentially a criminal offence
- Could put pupils in the school at risk
- Is violent
- Involves pupils being forced to use drugs or alcohol
- Involves sexual exploitation, sexual abuse or sexual harassment, such as indecent exposure, sexual assault, upskirting or sexually inappropriate pictures or videos (including the sharing of nudes and semi-nudes)

See appendix 4 for more information about child-on-child abuse.

Procedures for dealing with allegations of child-on-child abuse

If a pupil makes an allegation of abuse against another pupil:

- You must record the allegation and tell the DSL, but do not investigate it
- The DSL will contact the local authority children's social care team and follow its advice, as well as the police if the allegation involves a potential criminal offence
- The DSL will put a risk assessment and support plan into place for all children involved (including the victim(s), the child(ren) against whom the allegation has been made and any others affected) with a named person they can talk to if needed. This will include considering school transport as a potentially vulnerable place for a victim or alleged perpetrator(s)
- The DSL will contact the children and adolescent mental health services (CAMHS), if appropriate

If the incident is a criminal offence and there are delays in the criminal process, the DSL will work closely with the police (and other agencies as required) while protecting children and/or taking any disciplinary measures against the alleged perpetrator. We will ask the police if we have any questions about the investigation.

Creating a supportive environment in school and minimising the risk of child-on-child abuse

We recognise the importance of taking proactive action to minimise the risk of child-on-child abuse, and of creating a supportive environment where victims feel confident in reporting incidents.

To achieve this, we will:

- Challenge any form of derogatory or sexualised language or inappropriate behaviour between peers, including requesting or sending sexual images
- Be vigilant to issues that particularly affect different genders – for example, sexualised or aggressive touching or grabbing towards female pupils, and initiation or hazing type violence with respect to boys
- Ensure our curriculum helps to educate pupils about appropriate behaviour and consent
- Ensure pupils are able to easily and confidently report abuse using our reporting systems (as described in section 7.10 below)
- Ensure staff reassure victims that they are being taken seriously
- Be alert to reports of sexual violence and/or harassment that may point to environmental or systemic problems that could be addressed by updating policies, processes and the curriculum, or could reflect wider issues in the local area that should be shared with safeguarding partners
- Support children who have witnessed sexual violence, especially rape or assault by penetration. We will do all we can to make sure the victim, alleged perpetrator(s) and any witnesses are not bullied or harassed
- Consider intra-familial harms and any necessary support for siblings following a report of sexual violence and/or harassment
- Ensure staff are trained to understand:
 - How to recognise the indicators and signs of child-on-child abuse, and know how to identify it and respond to reports
 - That even if there are no reports of child-on-child abuse in school, it does not mean it is not happening – staff should maintain an attitude of “it could happen here”
 - That if they have any concerns about a child's welfare, they should act on them immediately rather than wait to be told, and that victims may not always make a direct report. For example:
 - Children can show signs or act in ways they hope adults will notice and react to
 - A friend may make a report
 - A member of staff may overhear a conversation
 - A child's behaviour might indicate that something is wrong
 - That certain children may face additional barriers to telling someone because of their

- vulnerability, disability, gender, ethnicity and/or sexual orientation
- That a pupil harming a peer could be a sign that the child is being abused themselves, and that this would fall under the scope of this policy
- The important role they have to play in preventing child-on-child abuse and responding where they believe a child may be at risk from it
- That they should speak to the DSL if they have any concerns
- That social media is likely to play a role in the fall-out from any incident or alleged incident, including for potential contact between the victim, alleged perpetrator(s) and friends from either side

The DSL will take the lead role in any disciplining of the alleged perpetrator(s). We will provide support at the same time as taking any disciplinary action.

Disciplinary action can be taken while other investigations are going on, e.g. by the police. The fact that another body is investigating or has investigated an incident doesn't (in itself) prevent our school from coming to its own conclusion about what happened and imposing a penalty accordingly. We will consider these matters on a case-by-case basis, taking into account whether:

- Taking action would prejudice an investigation and/or subsequent prosecution – we will liaise with the police and/or local authority children's social care to determine this
- There are circumstances that make it unreasonable or irrational for us to reach our own view about what happened while an independent investigation is ongoing

7.9 Sharing of nudes and semi-nudes ('sexting')

Your responsibilities when responding to an incident

If you are made aware of an incident involving the consensual or non-consensual sharing of nude or semi-nude images/videos (also known as 'sexting' or 'youth produced sexual imagery'), you must report it to the DSL immediately.

You must **not**:

- View, copy, print, share, store or save the imagery yourself, or ask a pupil to share or download it (if you have already viewed the imagery by accident, you must report this to the DSL)
- Delete the imagery or ask the pupil to delete it
- Ask the pupil(s) who are involved in the incident to disclose information regarding the imagery (this is the DSL's responsibility)
- Share information about the incident with other members of staff, the pupil(s) it involves or their, or other, parents and/or carers
- Say or do anything to blame or shame any young people involved

You should explain that you need to report the incident, and reassure the pupil(s) that they will receive support and help from the DSL.

Initial review meeting

Following a report of an incident, the DSL will hold an initial review meeting with appropriate school staff – this may include the staff member who reported the incident and the safeguarding or leadership team that deals with safeguarding concerns. This meeting will consider the initial evidence and aim to determine:

- Whether there is an immediate risk to pupil(s)
- If a referral needs to be made to the police and/or children's social care
- If it is necessary to view the image(s) in order to safeguard the young person (in most cases, images or videos should not be viewed)
- What further information is required to decide on the best response

- Whether the image(s) has been shared widely and via what services and/or platforms (this may be unknown)
- Whether immediate action should be taken to delete or remove images or videos from devices or online services
- Any relevant facts about the pupils involved which would influence risk assessment
- If there is a need to contact another school, college, setting or individual
- Whether to contact parents or carers of the pupils involved (in most cases parents/carers should be involved)

The DSL will make an immediate referral to police and/or children's social care if:

- The incident involves an adult
- There is reason to believe that a young person has been coerced, blackmailed or groomed, or if there are concerns about their capacity to consent (for example, owing to SEN)
- What the DSL knows about the images or videos suggests the content depicts sexual acts which are unusual for the young person's developmental stage, or are violent
- The imagery involves sexual acts and any pupil in the images or videos is under 13
- The DSL has reason to believe a pupil is at immediate risk of harm owing to the sharing of nudes and semi-nudes (for example, the young person is presenting as suicidal or self-harming)

If none of the above apply then the DSL, in consultation with the school leader and other members of staff as appropriate, may decide to respond to the incident without involving the police or children's social care. The decision will be made and recorded in line with the procedures set out in this policy.

Further review by the DSL

If at the initial review stage a decision has been made not to refer to police and/or children's social care, the DSL will conduct a further review to establish the facts and assess the risks.

They will hold interviews with the pupils involved (if appropriate).

If at any point in the process there is a concern that a pupil has been harmed or is at risk of harm, a referral will be made to children's social care and/or the police immediately.

Informing parents/carers

The DSL will inform parents/carers at an early stage and keep them involved in the process, unless there is a good reason to believe that involving them would put the pupil at risk of harm.

Recording incidents

All incidents of sharing of nudes and semi-nudes, and the decisions made in responding to them, will be recorded. The record-keeping arrangements set out in section 14 of this policy also apply to recording these incidents.

Curriculum coverage

Pupils are taught about the issues surrounding the sharing of nudes and semi-nudes as part of our relationships and sex education and computing programmes. Teaching covers the following in relation to the sharing of nudes and semi-nudes:

- What it is
- How it is most likely to be encountered
- The consequences of requesting, forwarding or providing such images, including when it is and is not abusive and when it may be deemed as online sexual harassment
- Issues of legality

- The risk of damage to people's feelings and reputation

Pupils also learn the strategies and skills needed to manage:

- Specific requests or pressure to provide (or forward) such images
- The receipt of such images

This policy on the sharing of nudes and semi-nudes is also shared with pupils so they are aware of the processes the school will follow in the event of an incident.

7.10 Reporting systems for our pupils

Where there is a safeguarding concern, we will take the child's wishes and feelings into account when determining what action to take and what services to provide.

We recognise the importance of ensuring pupils feel safe and comfortable to come forward and report any concerns and/or allegations.

To achieve this, each of our schools will:

- Put systems in place for pupils to confidently report abuse
- Ensure our reporting systems are well promoted, easily understood and easily accessible for pupils
- Make it clear to pupils that their concerns will be taken seriously, and that they can safely express their views and give feedback

8. Online safety and the use of mobile technology

We recognise the importance of safeguarding children from potentially harmful and inappropriate online material, and we understand that technology is a significant component in many safeguarding and wellbeing issues.

To address this, our school aims to:

- Have robust processes (including filtering and monitoring systems) in place to ensure the online safety of pupils, staff, volunteers and governors
- Protect and educate the whole school community in its safe and responsible use of technology, including mobile and smart technology (which we refer to as 'mobile phones')
- Set clear guidelines for the use of mobile phones for the whole school community
- Establish clear mechanisms to identify, intervene in and escalate any incidents or concerns, where appropriate

The 4 key categories of risk

Our approach to online safety is based on addressing the following categories of risk:

Content – being exposed to illegal, inappropriate or harmful content, such as pornography, fake news, racism, misogyny, self-harm, suicide, antisemitism, radicalisation and extremism

Contact – being subjected to harmful online interaction with other users, such as peer-to-peer pressure, commercial advertising and adults posing as children or young adults with the intention to groom or exploit them for sexual, criminal, financial or other purposes

Conduct – personal online behaviour that increases the likelihood of, or causes, harm, such as making, sending and receiving explicit images (e.g. consensual and non-consensual sharing of nudes and semi-nudes and/or pornography), sharing other explicit images and online bullying; and

Commerce – risks such as online gambling, inappropriate advertising, phishing and/or financial scams

To meet our aims and address the risks above, we will:

- Educate pupils about online safety as part of our curriculum. For example:
 - The safe use of social media, the internet and technology
 - Keeping personal information private
 - How to recognise unacceptable behaviour online
 - How to report any incidents of cyber-bullying, ensuring pupils are encouraged to do so, including where they're a witness rather than a victim
- Train staff, as part of their induction, on safe internet use and online safeguarding issues including cyber-bullying, the risks of online radicalisation, and the expectations, roles and responsibilities around filtering and monitoring. All staff members will receive refresher training as required and at least once each academic year
- Educate parents/carers about online safety via communications sent directly to them. We will also share clear procedures with them so they know how to raise concerns about online safety
- Make sure staff are aware of any restrictions placed on them with regards to the use of their mobile phone and cameras, for example that:
 - Staff are allowed to bring their personal phones to school for their own use, but will limit such use to non-contact time when pupils are not present
 - Staff will not take pictures or recordings of pupils on their personal phones or cameras
- Make all pupils, parents/carers, staff, volunteers and governors aware that they are expected to sign an agreement regarding the acceptable use of the internet in school, use of the school's ICT systems and use of their mobile and smart technology
- Explain the sanctions we will use if a pupil is in breach of our policies on the acceptable use of the internet and mobile phones
- Make sure all staff, pupils and parents/carers are aware that staff have the power to search pupils' phones, as set out in the [DfE's guidance on searching, screening and confiscation](#)
- Put in place robust filtering and monitoring systems to limit children's exposure to the 4 key categories of risk (described above) from the school's IT systems. We use Securly filtering in all schools. Securly is a fully KCSIE compliant filtering solution that provides both extension and DNS filtering.
- Carry out an annual review of filtering and monitoring solutions at board level
- Provide regular safeguarding and children protection updates including online safety to all staff, at least annually, in order to continue to provide them with the relevant skills and knowledge to safeguard effectively
- Review the child protection and safeguarding policy, including online safety, annually and ensure the procedures and implementation are updated and reviewed regularly

This section summarises our approach to online safety and mobile phone use. For full details about our school's policies in these areas, please refer to our online safety policy which can be found on the [trust website](#).

Information of the use of mobile phone and cameras in Early Years settings is set out in Appendix 7 of this policy.

8.1 Artificial intelligence (AI)

Generative artificial intelligence (AI) tools are now widespread and easy to access. Staff, pupils and parents/carers may be familiar with generative chatbots such as ChatGPT and Google Bard.

iMAT recognises that AI has many uses, including enhancing teaching and learning, and in helping to protect and safeguard pupils. However, AI may also have the potential to facilitate abuse (e.g. bullying and grooming) and/or expose pupils to harmful content. For example, in the form of 'deepfakes', where AI is used to create images, audio or video hoaxes that look real.

iMAT will treat any use of AI to access harmful content or bully pupils in line with this policy and our [anti-bullying/behaviour] policy.

Staff should be aware of the risks of using AI tools whilst they are still being developed and should carry out risk assessments for any new AI tool being used.

9. Notifying parents or carers

Where appropriate, we will discuss any concerns about a child with the child's parents or carers. The DSL will normally do this in the event of a suspicion or disclosure.

Other staff will only talk to parents or carers about any such concerns following consultation with the DSL.

If we believe that notifying the parents or carers would increase the risk to the child, we will discuss this with the local authority children's social care team before doing so.

In the case of allegations of abuse made against other children, we will normally notify the parents or carers of all the children involved. We will think carefully about what information we provide about the other child involved, and when. We will work with the police and/or local authority children's social care to make sure our approach to information sharing is consistent.

The DSL will, along with any relevant agencies (this will be decided on a case-by-case basis):

- Meet with the victim's parents or carers, with the victim, to discuss what's being put in place to safeguard them, and understand their wishes in terms of what support they may need and how the report will be progressed
- Meet with the alleged perpetrator's parents or carers to discuss support for them, and what's being put in place that will impact them, e.g. moving them out of classes with the victim, and the reason(s) behind any decision(s)

10. Pupils with special educational needs, disabilities or health issues

We recognise that pupils with SEND or certain health conditions can face additional safeguarding challenges, and are 3 times more likely to be abused than their peers. Additional barriers can exist when recognising abuse and neglect in this group, including:

- Assumptions that indicators of possible abuse such as behaviour, mood and injury relate to the child's condition without further exploration

- Pupils being more prone to peer group isolation or bullying (including prejudice-based bullying) than other pupils
- The potential for pupils with SEND, disabilities or certain health conditions being disproportionately impacted by behaviours such as bullying, without outwardly showing any signs
- Communication barriers and difficulties in managing or reporting these challenges

Any abuse involving pupils with SEND will require close liaison with the DSL (or deputy) and the SENCO.

11. Pupils with a social worker

Pupils may need a social worker due to safeguarding or welfare needs. We recognise that a child's experiences of adversity and trauma can leave them vulnerable to further harm as well as potentially creating barriers to attendance, learning, behaviour and mental health.

The DSL and all members of staff will work with and support social workers to help protect vulnerable children.

Where we are aware that a pupil has a social worker, the DSL will always consider this fact to ensure any decisions are made in the best interests of the pupil's safety, welfare and educational outcomes. For example, it will inform decisions about:

- Responding to unauthorised absence or missing education where there are known safeguarding risks
- The provision of pastoral and/or academic support

12. Looked-after and previously looked-after children

We will ensure that staff have the skills, knowledge and understanding to keep looked-after children and previously looked-after children safe. In particular, we will ensure that:

- Appropriate staff have relevant information about children's looked after legal status, contact arrangements with birth parents or those with parental responsibility, and care arrangements
- The DSL has details of children's social workers and relevant virtual school heads

We have appointed a designated teacher in each school who is responsible for promoting the educational achievement of looked-after children and previously looked-after children in line with [statutory guidance](#).

The designated teacher is appropriately trained and has the relevant qualifications and experience to perform the role.

As part of their role, the designated teacher will:

- Work closely with the DSL to ensure that any safeguarding concerns regarding looked-after and previously looked-after children are quickly and effectively responded to
- Work with virtual school heads to promote the educational achievement of looked-after and previously looked-after children, including discussing how pupil premium plus funding can be

best used to support looked-after children and meet the needs identified in their personal education plans

13. Complaints and concerns about school safeguarding policies

13.1 Complaints against staff

Complaints against staff that are likely to require a child protection investigation will be handled in accordance with our procedures for dealing with allegations of abuse made against staff, which can be found on the [trust website](#).

13.2 Whistle-blowing

The trust's whistle-blowing procedures can be found on the trust website.

However, where a staff member feels unable to raise an issue with their employer/through the whistle blowing procedure or feels that their genuine concerns are not being addressed, other whistleblowing channels may be open to them:

- Multi-Agency Safeguarding Hub: **0300 126 7000 (Option 1)**
- NSPCC whistleblowing helpline is available for staff who do not feel able to raise concerns regarding child protection failures internally. Staff can call: **0800 028 0285** – line is available from 8:00 AM to 8:00 PM, Monday to Friday and Email: help@nspcc.org.uk
Alternatively, staff can write to: National Society for the Prevention of Cruelty to Children (NSPCC), Weston House, 42 Curtain Road, London EC2A 3NH

Where a teacher's employer, including an agency, dismisses or ceases to use the services of a teacher because of serious misconduct, or might have dismissed them or ceased to use their services had they not left first, they must consider whether to refer the case to the Secretary of State (via the Teaching Regulation Agency)

14. Record-keeping

We will hold records in line with our records retention schedule.

All safeguarding concerns, discussions, decisions made and the reasons for those decisions, must be recorded in writing. If you are in any doubt about whether to record something, discuss it with the DSL.

Records will include:

- A clear and comprehensive summary of the concern
- Details of how the concern was followed up and resolved
- A note of any action taken, decisions reached and the outcome

Concerns and referrals will be kept in a separate child protection file for each child.

Any non-confidential records will be readily accessible and available. Confidential information and records will be held securely and only available to those who have a right or professional need to see them.

Safeguarding records relating to individual children will be retained for a reasonable period of time after they have left the school.

If a child for whom the school has, or has had, safeguarding concerns moves to another school, the DSL will ensure that their child protection file is forwarded as soon as possible, securely, and separately from the main pupil file.

To allow the new school/college to have support in place when the child arrives, this should be within:

5 days for an in-year transfer, or within

The first 5 days of the start of a new term

In addition, if the concerns are significant or complex, and/or social services are involved, the DSL will speak to the DSL of the receiving school and provide information to enable them to have time to make any necessary preparations to ensure the safety of the child.

When a child has made a disclosure, the member of staff/volunteer should:

- Record as soon as possible after the conversation. Use the school record of concern programme, MyConcern, wherever possible. If this is not accessible, there are record of concern sheets listed in the appendices of this policy;
- Do not destroy the original notes in case they are needed by a court;
- Record the date, time, place and any noticeable non-verbal behaviour and the words used by the child;
- Draw a diagram to indicate the position of any injuries;
- Record statements and observations rather than interpretations or assumptions
- All records need to be given to the Designated Safeguarding Lead promptly. No copies should be retained by the member of staff or volunteer.

15. Training

15.1 All staff

All staff members will undertake safeguarding and child protection training at induction, including on whistle-blowing procedures and online safety, to ensure they understand the school's safeguarding systems and their responsibilities, and can identify signs of possible abuse or neglect.

This training will be regularly updated and will:

- Be integrated, aligned and considered as part of the whole-school safeguarding approach and wider staff training, and curriculum planning
- Be in line with advice from the 3 safeguarding partners
- Include online safety, including an understanding of the expectations, roles and responsibilities for staff around filtering and monitoring
- Have regard to the Teachers' Standards to support the expectation that all teachers:
 - Manage behaviour effectively to ensure a good and safe environment
 - Have a clear understanding of the needs of all pupils

All staff will have training on the government's anti-radicalisation strategy, Prevent, to enable them to identify children at risk of being drawn into terrorism and to challenge extremist ideas.

Staff will also receive regular safeguarding and child protection updates, including on online safety, as required but at least annually (for example, through emails, e-bulletins and staff meetings).

Contractors who are provided through a private finance initiative (PFI) or similar contract will also receive safeguarding training.

Volunteers will receive appropriate training, if applicable.

15.2 The DSL and deputies

The DSL and deputies will undertake child protection and safeguarding training at least every 2 years.

In addition, they will update their knowledge and skills at regular intervals and at least annually (for example, through e-bulletins, meeting other DSLs, or taking time to read and digest safeguarding developments).

They will also undertake Prevent awareness training.

15.3 Directors and Governors

All directors and governors receive training about safeguarding and child protection (including online safety) at induction, which is regularly updated. This is to make sure that they:

- Have the knowledge and information needed to perform their functions and understand their responsibilities, such as providing strategic challenge
- Can be assured that safeguarding policies and procedures are effective and support the school to deliver a robust whole-school approach to safeguarding

As the chair of governors may be required to act as the 'case manager' in the event that an allegation of abuse is made against the school leader, they receive training in managing allegations for this purpose.

15.4 Recruitment – interview panels

At least 1 person conducting any interview for any post at the school will have undertaken safer recruitment training. This will cover, as a minimum, the contents of Keeping Children Safe in Education, and will be in line with local safeguarding procedures.

Please see the [trust website](#) for more information about our safer recruitment procedures.

15.5 Staff who have contact with pupils and families

All staff who have contact with children and families will have supervisions which will provide them with support, coaching and training, promote the interests of children and allow for confidential discussions of sensitive issues.

16. Monitoring arrangements

This policy will be reviewed **annually**. At every review, it will be approved by the trust board.

These appendices are based on the Department for Education's statutory guidance, Keeping Children Safe in Education.

Appendix 1: types of abuse

Abuse, including neglect, and safeguarding issues are rarely standalone events that can be covered by 1 definition or label. In most cases, multiple issues will overlap.

Physical abuse may involve hitting, shaking, throwing, poisoning, burning or scalding, drowning, suffocating or otherwise causing physical harm to a child. Physical harm may also be caused when a parent or carer fabricates the symptoms of, or deliberately induces, illness in a child.

Emotional abuse is the persistent emotional maltreatment of a child such as to cause severe and adverse effects on the child's emotional development. Some level of emotional abuse is involved in all types of maltreatment of a child, although it may occur alone.

Emotional abuse may involve:

- Conveying to a child that they are worthless or unloved, inadequate, or valued only insofar as they meet the needs of another person
- Not giving the child opportunities to express their views, deliberately silencing them or 'making fun' of what they say or how they communicate
- Age or developmentally inappropriate expectations being imposed on children. These may include interactions that are beyond a child's developmental capability, as well as overprotection and limitation of exploration and learning, or preventing the child participating in normal social interaction
- Seeing or hearing the ill-treatment of another
- Serious bullying (including cyber-bullying), causing children frequently to feel frightened or in danger, or the exploitation or corruption of children

Sexual abuse involves forcing or enticing a child or young person to take part in sexual activities, not necessarily involving a high level of violence, whether or not the child is aware of what is happening. The activities may involve:

- Physical contact, including assault by penetration (for example, rape or oral sex) or non-penetrative acts such as masturbation, kissing, rubbing and touching outside of clothing
- Non-contact activities, such as involving children in looking at, or in the production of, sexual images, watching sexual activities, encouraging children to behave in sexually inappropriate ways, or grooming a child in preparation for abuse (including via the internet)

Sexual abuse is not solely perpetrated by adult males. Women can also commit acts of sexual abuse, as can other children.

Neglect is the persistent failure to meet a child's basic physical and/or psychological needs, likely to result in the serious impairment of the child's health or development. Neglect may occur during pregnancy as a result of maternal substance abuse.

Once a child is born, neglect may involve a parent or carer failing to:

- Provide adequate food, clothing and shelter (including exclusion from home or abandonment)
- Protect a child from physical and emotional harm or danger
- Ensure adequate supervision (including the use of inadequate care-givers)
- Ensure access to appropriate medical care or treatment

It may also include neglect of, or unresponsiveness to, a child's basic emotional needs.

Appendix 2: specific safeguarding issues

Children who are absent from education

A child being absent from education, particularly repeatedly, can be a warning sign of a range of safeguarding issues. This might include abuse or neglect, such as sexual abuse or exploitation or child criminal exploitation, or issues such as mental health problems, substance abuse, radicalisation, FGM or forced marriage.

There are many circumstances where a child may be absent or become missing from education, but some children are particularly at risk. These include children who:

- Are at risk of harm or neglect
- Are at risk of forced marriage or FGM
- Come from Gypsy, Roma, or Traveller families
- Come from the families of service personnel
- Go missing or run away from home or care
- Are supervised by the youth justice system
- Cease to attend a school
- Come from new migrant families

We will follow our procedures for unauthorised absence and for dealing with children who are absent from education, particularly on repeat occasions, to help identify the risk of abuse and neglect, including sexual exploitation, and to help prevent the risks of going missing in future. This includes informing the local authority if a child leaves the school without a new school being named, and adhering to requirements with respect to sharing information with the local authority, when applicable, when removing a child's name from the admission register at non-standard transition points.

Staff will be trained in signs to look out for and the individual triggers to be aware of when considering the risks of potential safeguarding concerns which may be related to being absent, such as travelling to conflict zones, FGM and forced marriage.

If a staff member suspects that a child is suffering from harm or neglect, we will follow local child protection procedures, including with respect to making reasonable enquiries. We will make an immediate referral to the local authority children's social care team, and the police, if the child is suffering or likely to suffer from harm, or in immediate danger.

Child criminal exploitation

Child criminal exploitation (CCE) is a form of abuse where an individual or group takes advantage of an imbalance of power to coerce, control, manipulate or deceive a child into criminal activity, in exchange for something the victim needs or wants, and/or for the financial or other advantage of the perpetrator or facilitator, and/or through violence or the threat of violence.

The abuse can be perpetrated by males or females, and children or adults. It can be a one-off occurrence or a series of incidents over time, and range from opportunistic to complex organised abuse.

The victim can be exploited even when the activity appears to be consensual. It does not always involve physical contact and can happen online. For example, young people may be forced to work in cannabis factories, coerced into moving drugs or money across the country (county lines), forced to shoplift or pickpocket, or to threaten other young people.

Indicators of CCE can include a child:

- Appearing with unexplained gifts or new possessions
- Associating with other young people involved in exploitation
- Suffering from changes in emotional wellbeing
- Misusing drugs and alcohol
- Going missing for periods of time or regularly coming home late
- Regularly missing school or education
- Not taking part in education

If a member of staff suspects CCE, they will discuss this with the DSL. The DSL will trigger the local

safeguarding procedures, including a referral to the local authority's children's social care team and the police, if appropriate.

Child sexual exploitation

Child sexual exploitation (CSE) is a form of child sexual abuse where an individual or group takes advantage of an imbalance of power to coerce, manipulate or deceive a child into sexual activity, in exchange for something the victim needs or wants and/or for the financial advantage or increased status of the perpetrator or facilitator. It may, or may not, be accompanied by violence or threats of violence.

The abuse can be perpetrated by males or females, and children or adults. It can be a one-off occurrence or a series of incidents over time, and range from opportunistic to complex organised abuse.

The victim can be exploited even when the activity appears to be consensual. Children or young people who are being sexually exploited may not understand that they are being abused. They often trust their abuser and may be tricked into believing they are in a loving, consensual relationship.

CSE can include both physical contact (penetrative and non-penetrative acts) and non-contact sexual activity. It can also happen online. For example, young people may be persuaded or forced to share sexually explicit images of themselves, have sexual conversations by text, or take part in sexual activities using a webcam. CSE may also occur without the victim's immediate knowledge, for example through others copying videos or images.

In addition to the CCE indicators above, indicators of CSE can include a child:

- Having an older boyfriend or girlfriend
- Suffering from sexually transmitted infections or becoming pregnant

If a member of staff suspects CSE, they will discuss this with the DSL. The DSL will trigger the local safeguarding procedures, including a referral to the local authority's children's social care team and the police, if appropriate.

Child-on-child abuse

Child-on-child abuse is when children abuse other children. This type of abuse can take place inside and outside of school. It can also take place both face-to-face and online, and can occur simultaneously between the 2.

Our school has a zero-tolerance approach to sexual violence and sexual harassment. We recognise that even if there are no reports, that doesn't mean that this kind of abuse isn't happening.

Child-on-child abuse is most likely to include, but may not be limited to:

- Bullying (including cyber-bullying, prejudice-based and discriminatory bullying)
- Abuse in intimate personal relationships between children (this is sometimes known as 'teenage relationship abuse')
- Physical abuse such as hitting, kicking, shaking, biting, hair pulling, or otherwise causing physical harm (this may include an online element which facilitates, threatens and/or encourages physical abuse)
- Sexual violence, such as rape, assault by penetration and sexual assault (this may include an online element which facilitates, threatens and/or encourages sexual violence)
- Sexual harassment, such as sexual comments, remarks, jokes and online sexual harassment, which may be standalone or part of a broader pattern of abuse
- Causing someone to engage in sexual activity without consent, such as forcing someone to strip, touch themselves sexually, or to engage in sexual activity with a third party
- Consensual and non-consensual sharing of nude and semi-nude images and/or videos (also known as sexting or youth produced sexual imagery)
- Upskirting, which typically involves taking a picture under a person's clothing without their

permission, with the intention of viewing their genitals or buttocks to obtain sexual gratification, or cause the victim humiliation, distress or alarm

- Initiation/hazing type violence and rituals (this could include activities involving harassment, abuse or humiliation used as a way of initiating a person into a group and may also include an online element)

Where children abuse their peers online, this can take the form of, for example, abusive, harassing, and misogynistic messages; the non-consensual sharing of indecent images, especially around chat groups; and the sharing of abusive images and pornography, to those who don't want to receive such content.

If staff have any concerns about child-on-child abuse, or a child makes a report to them, they will follow the procedures set out in section 7 of this policy, as appropriate. In particular, section 7.8 and 7.9 set out more detail about our school's approach to this type of abuse.

When considering instances of harmful sexual behaviour between children, we will consider their ages and stages of development. We recognise that children displaying harmful sexual behaviour have often experienced their own abuse and trauma, and will offer them appropriate support.

Domestic abuse

Children can witness and be adversely affected by domestic abuse and/or violence at home where it occurs between family members. In some cases, a child may blame themselves for the abuse or may have had to leave the family home as a result.

Types of domestic abuse include intimate partner violence, abuse by family members, teenage relationship abuse (abuse in intimate personal relationships between children) and child/adolescent to parent violence and abuse. It can be physical, sexual, financial, psychological or emotional. It can also include ill treatment that isn't physical, as well as witnessing the ill treatment of others – for example, the impact of all forms of domestic abuse on children.

Anyone can be a victim of domestic abuse, regardless of gender, age, ethnicity, socioeconomic status, sexuality or background, and domestic abuse can take place inside or outside of the home. Children who witness domestic abuse are also victims.

Exposure to domestic abuse and/or violence can have a serious, long-lasting emotional and psychological impact on children and affect their health, wellbeing, development and ability to learn.

If police are called to an incident of domestic abuse and any children in the household have experienced the incident, the police will inform the key adult in school (usually the designated safeguarding lead) before the child or children arrive at school the following day. This is the procedure where police forces are part of Operation Encompass.

The DSL will provide support according to the child's needs and update records about their circumstances.

Homelessness

Being homeless or being at risk of becoming homeless presents a real risk to a child's welfare.

The DSL and deputies will be aware of contact details and referral routes into the local housing authority so they can raise/progress concerns at the earliest opportunity (where appropriate and in accordance with local procedures).

Where a child has been harmed or is at risk of harm, the DSL will also make a referral to children's social care.

So-called 'honour-based' abuse (including FGM and forced marriage)

So-called 'honour-based' abuse (HBA) encompasses incidents or crimes committed to protect or defend the honour of the family and/or community, including FGM, forced marriage, and practices such as breast ironing.

Abuse committed in this context often involves a wider network of family or community pressure and can include multiple perpetrators.

All forms of HBA are abuse and will be handled and escalated as such. All staff will be alert to the possibility of a child being at risk of HBA or already having suffered it. If staff have a concern, they will speak to the DSL, who will activate local safeguarding procedures.

FGM

The DSL will make sure that staff have access to appropriate training to equip them to be alert to children affected by FGM or at risk of FGM.

Section 7.3 of this policy sets out the procedures to be followed if a staff member discovers that an act of FGM appears to have been carried out or suspects that a pupil is at risk of FGM.

Indicators that FGM has already occurred include:

- A pupil confiding in a professional that FGM has taken place
- A mother/family member disclosing that FGM has been carried out
- A family/pupil already being known to social services in relation to other safeguarding issues
- A girl:
 - Having difficulty walking, sitting or standing, or looking uncomfortable
 - Finding it hard to sit still for long periods of time (where this was not a problem previously)
 - Spending longer than normal in the bathroom or toilet due to difficulties urinating
 - Having frequent urinary, menstrual or stomach problems
 - Avoiding physical exercise or missing PE
 - Being repeatedly absent from school, or absent for a prolonged period
 - Demonstrating increased emotional and psychological needs – for example, withdrawal or depression, or significant change in behaviour
 - Being reluctant to undergo any medical examinations
 - Asking for help, but not being explicit about the problem
 - Talking about pain or discomfort between her legs

Potential signs that a pupil may be at risk of FGM include:

- The girl's family having a history of practising FGM (this is the biggest risk factor to consider)
- FGM being known to be practised in the girl's community or country of origin
- A parent or family member expressing concern that FGM may be carried out
- A family not engaging with professionals (health, education or other) or already being known to social care in relation to other safeguarding issues
- A girl:
 - Having a mother, older sibling or cousin who has undergone FGM
 - Having limited level of integration within UK society
 - Confiding to a professional that she is to have a "special procedure" or to attend a special occasion to "become a woman"
 - Talking about a long holiday to her country of origin or another country where the practice is prevalent, or parents/carers stating that they or a relative will take the girl out of the country for a prolonged period
 - Requesting help from a teacher or another adult because she is aware or suspects that she is at immediate risk of FGM
 - Talking about FGM in conversation – for example, a girl may tell other children about it (although it is important to take into account the context of the discussion)
 - Being unexpectedly absent from school

- Having sections missing from her 'red book' (child health record) and/or attending a travel clinic or equivalent for vaccinations/anti-malarial medication

The above indicators and risk factors are not intended to be exhaustive.

Forced marriage

Forcing a person into marriage is a crime. A forced marriage is one entered into without the full and free consent of 1 or both parties and where violence, threats, or any other form of coercion is used to cause a person to enter into a marriage. Threats can be physical or emotional and psychological.

It is also illegal to cause a child under the age of 18 to marry, even if violence, threats or coercion are not involved.

Staff will receive training around forced marriage and the presenting symptoms. We are aware of the '1 chance' rule, i.e. we may only have 1 chance to speak to the potential victim and only 1 chance to save them.

If a member of staff suspects that a pupil is being forced into marriage, they will speak to the pupil about their concerns in a secure and private place. They will then report this to the DSL.

The DSL will:

- Speak to the pupil about the concerns in a secure and private place
- Activate the local safeguarding procedures and refer the case to the local authority's designated officer
- Seek advice from the Forced Marriage Unit on 020 7008 0151 or fmua@fco.gov.uk
- Refer the pupil to an education welfare officer, pastoral tutor, learning mentor, or school counsellor, as appropriate

Preventing radicalisation

- **Radicalisation** refers to the process by which a person comes to support terrorism and extremist ideologies associated with terrorist groups
- **Extremism** is vocal or active opposition to fundamental British values, such as democracy, the rule of law, individual liberty, and mutual respect and tolerance of different faiths and beliefs. This also includes calling for the death of members of the armed forces
- **Terrorism** is an action that:
 - Endangers or causes serious violence to a person/people;
 - Causes serious damage to property; or
 - Seriously interferes or disrupts an electronic system

The use or threat of terrorism must be designed to influence the government or to intimidate the public and is made for the purpose of advancing a political, religious or ideological cause.

Schools have a duty to prevent children from being drawn into terrorism. The DSL will undertake Prevent awareness training and make sure that staff have access to appropriate training to equip them to identify children at risk.

We will assess the risk of children in our school being drawn into terrorism. This assessment will be based on an understanding of the potential risk in our local area, in collaboration with our local safeguarding partners and local police force.

We will ensure that suitable internet filtering is in place, and equip our pupils to stay safe online at school and at home.

There is no single way of identifying an individual who is likely to be susceptible to an extremist ideology. Radicalisation can occur quickly or over a long period.

Staff will be alert to changes in pupils' behaviour.

The government website [Educate Against Hate](#) and charity [NSPCC](#) say that signs that a pupil is being radicalised can include:

- Refusal to engage with, or becoming abusive to, peers who are different from themselves
- Becoming susceptible to conspiracy theories and feelings of persecution
- Changes in friendship groups and appearance
- Rejecting activities they used to enjoy
- Converting to a new religion
- Isolating themselves from family and friends
- Talking as if from a scripted speech
- An unwillingness or inability to discuss their views
- A sudden disrespectful attitude towards others
- Increased levels of anger
- Increased secretiveness, especially around internet use
- Expressions of sympathy for extremist ideologies and groups, or justification of their actions
- Accessing extremist material online, including on Facebook or Twitter
- Possessing extremist literature
- Being in contact with extremist recruiters and joining, or seeking to join, extremist organisations

Children who are at risk of radicalisation may have low self-esteem, or be victims of bullying or discrimination. It is important to note that these signs can also be part of normal teenage behaviour – staff should have confidence in their instincts and seek advice if something feels wrong.

If staff are concerned about a pupil, they will follow our procedures set out in section 7.5 of this policy, including discussing their concerns with the DSL.

Staff should always take action if they are worried.

Sexual violence and sexual harassment between children in schools

Sexual violence and sexual harassment can occur:

- Between 2 children of any age and sex
- Through a group of children sexually assaulting or sexually harassing a single child or group of children
- Online and face to face (both physically and verbally)

Sexual violence and sexual harassment exist on a continuum and may overlap.

Children who are victims of sexual violence and sexual harassment will likely find the experience stressful and distressing. This will, in all likelihood, adversely affect their educational attainment and will be exacerbated if the alleged perpetrator(s) attends the same school.

If a victim reports an incident, it is essential that staff make sure they are reassured that they are being taken seriously and that they will be supported and kept safe. A victim should never be given the impression that they are creating a problem by reporting any form of abuse or neglect. Nor should a victim ever be made to feel ashamed for making a report.

When supporting victims, staff will:

- Reassure victims that the law on child-on-child abuse is there to protect them, not criminalise them
- Regularly review decisions and actions, and update policies with lessons learnt
- Look out for potential patterns of concerning, problematic or inappropriate behaviour, and decide on a course of action where we identify any patterns
- Consider if there are wider cultural issues within the school that enabled inappropriate behaviour to occur and whether revising policies and/or providing extra staff training could minimise the risk of it happening again

- Remain alert to the possible challenges of detecting signs that a child has experienced sexual violence, and show sensitivity to their needs

Some groups are potentially more at risk. Evidence shows that girls, children with SEND and/or disabilities, and lesbian, gay, bisexual and transgender (LGBT) children are at greater risk.

Staff should be aware of the importance of:

- Challenging inappropriate behaviours
- Making clear that sexual violence and sexual harassment is not acceptable, will never be tolerated and is not an inevitable part of growing up
- Challenging physical behaviours (potentially criminal in nature), such as grabbing bottoms, breasts and genitalia, pulling down trousers, flicking bras and lifting up skirts. Dismissing or tolerating such behaviours risks normalising them

If staff have any concerns about sexual violence or sexual harassment, or a child makes a report to them, they will follow the procedures set out in section 7 of this policy, as appropriate. In particular, section 7.8 and 7.9 set out more detail about our school's approach to this type of abuse.

Serious violence

Indicators which may signal that a child is at risk from, or involved with, serious violent crime may include:

- Increased absence from school
- Change in friendships or relationships with older individuals or groups
- Significant decline in performance
- Signs of self-harm or a significant change in wellbeing
- Signs of assault or unexplained injuries
- Unexplained gifts or new possessions (this could indicate that the child has been approached by, or is involved with, individuals associated with criminal networks or gangs and may be at risk of criminal exploitation (see above))

Risk factors which increase the likelihood of involvement in serious violence include:

- Being male
- Having been frequently absent or permanently excluded from school
- Having experienced child maltreatment
- Having been involved in offending, such as theft or robbery

Staff will be aware of these indicators and risk factors. If a member of staff has a concern about a pupil being involved in, or at risk of, serious violence, they will report this to the DSL.

Checking the identity and suitability of visitors

All visitors will be required to verify their identity to the satisfaction of staff and to leave their belongings, including their mobile phone(s), in a safe place during their visit.

If the visitor is unknown to the setting, we will check their credentials and reason for visiting before allowing them to enter the setting. Visitors should be ready to produce identification.

Visitors are expected to sign the visitors' book and wear a visitor's badge.

Visitors to the school who are visiting for a professional purpose, such as educational psychologists and school improvement officers, will be asked to show photo ID and:

- Will be asked to show their DBS certificate, which will be checked alongside their photo ID; or
- The organisation sending the professional, such as the LA or educational psychology service, will provide prior written confirmation that an appropriate level of DBS check has been carried out (if this is provided, we will not ask to see the DBS certificate)

All other visitors, including visiting speakers, will be accompanied by a member of staff at all times.

We will not invite into the school any speaker who is known to disseminate extremist views, and will carry out appropriate checks to ensure that any individual or organisation using school facilities is not seeking to disseminate extremist views or radicalise pupils or staff.

Non-collection of children

If a child is not collected at the end of the session/day, we will:

Woodford Halse:

We aim to provide a safe and caring environment. In the event that a child is not collected or collection is delayed, they will be reassured in order to cause as little distress as possible. In the event that a child is not collected by an authorised adult, we put into practice the agreed procedures, unless agreement to walk home alone has been obtained.

If it appears that there have been no alternative arrangements made for the collection of a child by the parent/carer, the school staff should take the following steps:

- From 3.25pm children will be taken to the school office and staff will attempt to phone the parents/carers that are given on the child's form.
- Staff will attempt to contact any other adults identified as emergency contacts on file.
- Staff will attempt to contact any other parents/carers who are known to the family to gather information on the child's parent's whereabouts.
- All reasonable attempts are made to contact the parents or nominated carers or emergency contacts. The child does not leave the premises with anyone other than those named on the registration form or an adult who the parents have informed school have permission to collect the child.
- If no one collects the child by 3.40 and there is no one who can be contacted to collect the child, we apply the procedures for uncollected children. The child will be placed into The Nest after school club and the parent/carer will be charged for the session. This does not mean that the child has a place in this club from that point onwards

Rothersthorpe - further information can be found in the school's Dismissal Procedure

Staff remain in the playground until 3.40pm with any children not yet collected. At 3.40pm staff and any uncollected children go into school and wait in the school reception area to watch for parent/carer to arrive.

Any telephone messages from parents/carers to school advising of their late arrival are communicated to the class teacher and child. Arrangements are made for the said child to be supervised until the parent/carer arrives.

If no message has been received, staff will telephone parents/carers to remind them that their child is ready for collection.

If contact with parents/carers and all emergencies contacts, cannot be made by 4.30pm, NCC procedures state that we must contact the Police.

Kilsby:

Teachers will wait with children until 3.20pm, then they will put the child into the school's after school club whilst they make contact with the parents.

Paulerspury:

- Child waits with adult at their normal class exit until 3.20 unless parents have been slightly delayed
- If no one collects the child by 3.20 the child will be taken to the entrance lobby and a check will be made with office staff for any message from parents explaining lateness
- If no message has been received the main contact for that child will be telephoned for an explanation

- If the main contact is unavailable then additional named contacts will be telephoned
- If contact is still unsuccessful, staff will attempt to contact any other parents/carers who are known to the family to gather information on the child's parent's whereabouts
- All reasonable attempts are made to contact the parents or nominated carers or emergency contacts. The child does not leave the premises with anyone other than those named on the registration form or an adult who the parents have informed school have permission to collect the child.
- If no one collects the child by 3.40 and there is no one who can be contacted to collect the child, we apply the procedures for uncollected children. The child will be placed into Pury Play after school club and the parent/carer will be charged for the session. This does not mean that the child has a place in this club from that point onwards

Badby:

The child will be sent to the early after school club while the office phones their parents to see if they are on their way. If there is no answer, the school will work down the contact list. The office will keep calling until we have spoken to a parent.

There is no charge for a one off instance, if parents are no more than ten minutes late. If parents are frequently late and have not phoned the office, the school will charge the full amount of the early session.

Weedon Bec:

In the event that a child is not collected or collection is delayed, they will be reassured in order to cause as little distress as possible. If it appears that there have been no alternative arrangements made for the collection of a child by the parent/carer, the school staff should take the following steps:

- From 3.25pm children will be taken to the school office and a member of staff will attempt to phone the parents/carers that are given on the child's form.
- Staff will attempt to contact any other adults identified as emergency contacts on file.
- Staff will attempt to contact any other parents/carers who are known to the family to gather information on the child's parent's whereabouts.
- All reasonable attempts are made to contact the parents or nominated carers or emergency contacts. The child does not leave the premises with anyone other than those named on the registration form or an adult who the parents have informed school have permission to collect the child.
- If no one collects the child by 3.40pm and there is no one who can be contacted to collect the child, we apply the procedures for uncollected children. The child will be placed in Stepping Stones and the parent/carer will be charged for the session.
- If contact with parents/carers and all emergencies contacts, cannot be made by 4.30pm, NCC procedures state that we must contact the police.

Missing pupils

Our procedures are designed to ensure that a missing child is found and returned to effective supervision as soon as possible. Schools have adopted their own missing pupil policies.

Appendix 3: Additional advice and support

There is a wealth of information available to support schools and colleges. The following list is not exhaustive but should provide a useful starting point:

Abuse

- [Supporting practice in tackling child sexual abuse - CSA Centre](#) - Centre of Expertise on Child Sexual Abuse has free evidence-based practice resources to help professionals working with children and young people to identify and respond appropriately to concerns of child sexual abuse.
- [What to do if you're worried a child is being abused](#) – DfE advice
- [Domestic abuse: Various Information/Guidance](#) - Home Office (HO)
- [Faith based abuse: National Action Plan](#) - DfE advice
- [Disrespect NoBody campaign - GOV.UK](#) - Home Office website
- [Tackling Child Sexual Abuse Strategy](#) – Home Office policy paper
- [Together we can stop child sexual abuse](#) – HM Government campaign

Bullying

- [Preventing bullying including cyberbullying](#) - DfE advice

Children missing from education, home or care

- [Children missing education](#) - DfE statutory guidance
- [Child missing from home or care](#) - DfE statutory guidance
- [Children and adults missing strategy](#) - Home Office strategy

Children with family members in prison

- [National Information Centre on Children of Offenders](#) - Barnardo's in partnership with HM Prison and Probation Service

Child Exploitation

- [Trafficking: safeguarding children](#) - DfE and Home Office guidance
- [Care of unaccompanied and trafficked children](#) – DfE statutory guidance
- [Modern slavery: how to identify and support victims](#) – HO statutory guidance
- [Child exploitation disruption toolkit](#) - HO statutory guidance
- [County Lines Toolkit For Professionals](#) - The Children's Society in partnership with Victim Support and National Police Chiefs' Council

Confidentiality

[Gillick competency Fraser guidelines](#) - Guidelines to help with balancing children's rights along with safeguarding responsibilities.

Drugs

[Drug strategy 2021](#) - Home Office strategy

[Information and advice on drugs](#) - Talk to Frank website

[Drug and Alcohol education — teacher guidance & evidence review](#) – PSHE Association

(so called) “Honour Based Abuse” including FGM and forced marriage

[Female genital mutilation: information and resources](#)- Home Office guidance

[Female genital mutilation: multi agency statutory guidance](#) - DfE, Department for Health, and Home Office

[Forced marriage](#) - Forced Marriage Unit (FMU) resources

[Forced marriage](#) - Government multi-agency practice guidelines and multi-agency statutory guidance

[FGM resource pack](#) – HM Government guidance

Health and Well-being

[Rise Above: Free PSHE resources on health, wellbeing and resilience](#) - Public Health England

[Supporting pupils at schools with medical conditions](#) - DfE statutory guidance

[Mental health and behaviour in schools](#) - DfE advice

[Overview - Fabricated or induced illness](#) - NHS advice

Homelessness

[Homelessness code of guidance for local authorities](#) – Department for Levelling Up, Housing and Communities guidance

Information Sharing

[Government information sharing advice](#) - Guidance on information sharing for people who provide safeguarding services to children, young people, parents and carers.

[Information Commissioner's Office: Data sharing information hub](#) - Information to help schools and colleges comply with UK data protection legislation including UK GDPR.

Online safety-advice

[Childnet](#) provide guidance for schools on cyberbullying

[Educateagainsthate](#) provides practical advice and support on protecting children from extremism and radicalisation

[London Grid for Learning](#) provides advice on all aspects of a school or college's online safety arrangements

[NSPCC E-safety for schools](#) provides advice, templates, and tools on all aspects of a school or college's online safety arrangements

[Safer recruitment consortium](#) "guidance for safe working practice", which may help ensure staff behaviour policies are robust and effective

[Searching screening and confiscation](#) is departmental advice for schools on searching children and confiscating items such as mobile phones

[South West Grid for Learning](#) provides advice on all aspects of a school or college's online safety arrangements

[Use of social media for online radicalisation](#) - A briefing note for schools on how social media is used to encourage travel to Syria and Iraq

[Online Safety Audit Tool](#) from UK Council for Internet Safety to help mentors of trainee teachers and newly qualified teachers induct mentees and provide ongoing support, development and monitoring

[Online safety guidance if you own or manage an online platform](#) DCMS advice

[A business guide for protecting children on your online platform](#) DCMS advice

[UK Safer Internet Centre](#) provide tips, advice, guides and other resources to help keep children safe online

Online safety- Remote education, virtual lessons and live streaming

[Case studies](#) for schools to learn from each other

[Guidance Get help with remote education](#) resources and support for teachers and school leaders on educating pupils and students

[Departmental guidance on safeguarding and remote education](#) including planning remote education strategies and teaching remotely

[London Grid for Learning](#) guidance, including platform specific advice

[National cyber security centre](#) guidance on choosing, configuring and deploying video conferencing

[UK Safer Internet Centre](#) guidance on safe remote learning

Online Safety- Support for children

[Childline](#) for free and confidential advice

[UK Safer Internet Centre](#) to report and remove harmful online content

[CEOP](#) for advice on making a report about online abuse

Online safety- Parental support

[Childnet](#) offers a toolkit to support parents and carers of children of any age to start discussions about their online life, and to find out where to get more help and support

[Commonsensemedia](#) provide independent reviews, age ratings, & other information about all types of media for children and their parents

[Government advice](#) about protecting children from specific online harms such as child

sexual abuse, sexting, and cyberbullying

[Internet Matters](#) provide age-specific online safety checklists, guides on how to set parental controls, and practical tips to help children get the most out of their digital world
How Can I Help My Child? Marie Collins Foundation – Sexual Abuse Online

[Let's Talk About It](#) provides advice for parents and carers to keep children safe from online radicalisation

[London Grid for Learning](#) provides support for parents and carers to keep their children safe online, including tips to keep primary aged children safe online

[Stopitnow](#) resource from [The Lucy Faithfull Foundation](#) can be used by parents and carers who are concerned about someone's behaviour, including children who may be displaying concerning sexual behaviour (not just about online)

[National Crime Agency/CEOP Thinkuknow](#) provides support for parents and carers to keep their children safe online

[Net-aware](#) provides support for parents and carers from the NSPCC and O2, including a guide to social networks, apps and games

[Parentzone](#) provides help for parents and carers on how to keep their children safe online

[Talking to your child about online sexual harassment: A guide for parents](#) – This is the Children's Commissioner's parent guide on talking to your children about online sexual harassment

[#Ask the awkward](#) – Child Exploitation and Online Protection Centre guidance to parents to talk to their children about online relationships

Private fostering

[Private fostering: local authorities](#) - DfE statutory guidance

Radicalisation

[Prevent duty guidance](#) - Home Office guidance

[Prevent duty: additional advice for schools and childcare providers](#) - DfE advice

[Educate Against Hate website](#) - DfE and Home Office advice

[Prevent for FE and Training](#) - Education and Training Foundation (ETF)

[Extremism and Radicalisation Safeguarding Resources](#) – Resources by London Grid for Learning

Serious Violence

[Serious violence strategy](#) - Home Office Strategy

[Factors linked to serious violence and how these factors can be used to identify individuals for intervention](#) – Home Office

[Youth Endowment Fund](#) – Home Office

[Gangs and youth violence: for schools and colleges](#) - Home Office advice

[Tackling violence against women and girls strategy](#) - Home Office strategy

[Violence against women and girls: national statement of expectations for victims](#) - Home Office guidance

Sexual violence and sexual harassment

Specialist Organisations

[Barnardo's](#) - UK charity caring for and supporting some of the most vulnerable children and young people through their range of services.

[Lucy Faithfull Foundation](#) - UK-wide child protection charity dedicated to preventing child sexual abuse. They work with families affected by sexual abuse and also run the confidential Stop it Now! Helpline.

[Marie Collins Foundation](#) – Charity that, amongst other things, works directly with children, young people, and families to enable their recovery following sexual abuse.

[NSPCC](#) - Children's charity specialising in child protection with statutory powers enabling them to take action and safeguard children at risk of abuse.

[Rape Crisis](#) - National charity and the umbrella body for their network of independent member Rape Crisis Centres.

[UK Safer Internet Centre](#) - Provides advice and support to children, young people, parents, carers and schools about staying safe online.

Harmful sexual behaviour

[Rape Crisis \(England & Wales\)](#) or [The Survivors Trust](#) for information, advice, and details of local specialist sexual violence organisations.

[NICE guidance](#) contains information on, amongst other things: developing interventions; 159

working with families and carers; and multi-agency working.

[HSB toolkit](#) The Lucy Faithfull Foundation - designed for parents, carers, family members and professionals, to help everyone play their part in keeping children safe. It has links to useful information, resources, and support as well as practical tips to prevent harmful sexual behaviour and provide safe environments for families.

[NSPCC Learning: Protecting children from harmful sexual behaviour](#) and [NSPCC - Harmful sexual behaviour framework](#)- free and independent advice about HSB.

[Contextual Safeguarding Network – Beyond Referrals](#) (Schools) provides a school selfassessment toolkit and guidance for addressing HSB in schools.

[Preventing harmful sexual behaviour in children - Stop It Now](#) provides a guide for parents, carers and professionals to help everyone do their part in keeping children safe, they also run a free confidential helpline.

Support for Victims

[Anti-Bullying Alliance](#) - Detailed information for anyone being bullied, along with advice for parents and schools. Signposts to various helplines and websites for further support.

[Rape Crisis](#) - Provide and signpost to a range of services to support people who have experienced rape, child abuse or any kind of sexual violence.

[The Survivors Trust](#)- UK-wide national umbrella agency with resources and support dedicated to survivors of rape, sexual violence and child sex abuse.

[Victim Support](#) - Supporting children and young people who have been affected by crime. Also provides support to parents and professionals who work with children and young people – regardless of whether a crime has been reported or how long ago it was.

[Childline](#) provides free and confidential advice for children and young people.

Toolkits

[ask AVA](#) - The Ask AVA prevention platform has been created to support education practitioners across the UK to develop and deliver a comprehensive programme to stop Violence Against Women and Girls.

[NSPCC](#) - Online Self-assessment tool to ensure organisations are doing everything they can to safeguard children.

[NSPCC](#) - Resources which help adults respond to children disclosing abuse.

NSPCC also provides free and independent advice about HSB: [NSPCC - Harmful sexual behaviour framework](#)

[Safeguarding Unit, Farrer and Co. and Carlene Firmin, MBE, University of Bedfordshire](#) - Peer-on-Peer Abuse toolkit provides practical guidance for schools on how to prevent, identify early and respond appropriately to peer-on-peer abuse.

[Contextual Safeguarding Network](#) – self-assessment toolkit for schools to assess their own response to HSB.

[Childnet - STAR SEND Toolkit](#) equips, enables and empowers educators with the knowledge to support young people with special educational needs and disabilities.

[Childnet - Just a joke?](#) provides lesson plans, activities, a quiz and teaching guide designed to explore problematic online sexual behaviour with 9-12 year olds.

[Childnet - Step Up. Speak Up](#) a practical campaign toolkit that addresses the issue of online sexual harassment amongst young people aged 13-17 years old.

[NSPCC - Harmful sexual behaviour framework](#) An evidence-informed framework for children and young people displaying HSB.

[Contextual Safeguarding Network – Beyond Referrals - Schools](#) levers for addressing HSB in schools.

Sharing nudes and semi-nudes

[London Grid for Learning-collection of advice](#) - Various information and resources dealing

with the sharing of nudes and semi-nudes.

[UKCIS Sharing nudes and semi-nudes: advice for education settings working with children and young people](#) - Advice for schools and colleges on responding to incidents of non-consensual sharing of nudes and semi-nudes.

Support for parents/carers

NCA CEOP [Thinkuknow](#): Advice/resources on how to deal with concerns about what children may be doing online including advice on how to help challenge harmful sexual attitudes and start a conversation to [support positive sexual behaviour](#).

[Link to Keeping Children Safe in Education](#)

APPENDIX 4: DECLARATION FOR STAFF



DECLARATION FOR STAFF

Child Protection Policy and Keeping Children Safe in Education (DfE 2023)

Academic Year

Please sign and return to(DSL) by

I, _____ have read and am familiar with the contents of the following documents and understand my role and responsibilities as set out in these document(s):

- (1) The School/College's Child Protection Policy
- (2) **Part 1** of 'Keeping Children Safe in Education' DfE Guidance, 2023
- (3) Staff Code of Conduct

I am aware that the DSLs are:

.....
.....
.....
.....

and I am able to discuss any concerns that I may have with them.

I know that further guidance, together with copies of the policies mentioned above, are available in the staffroom display board or via the school office

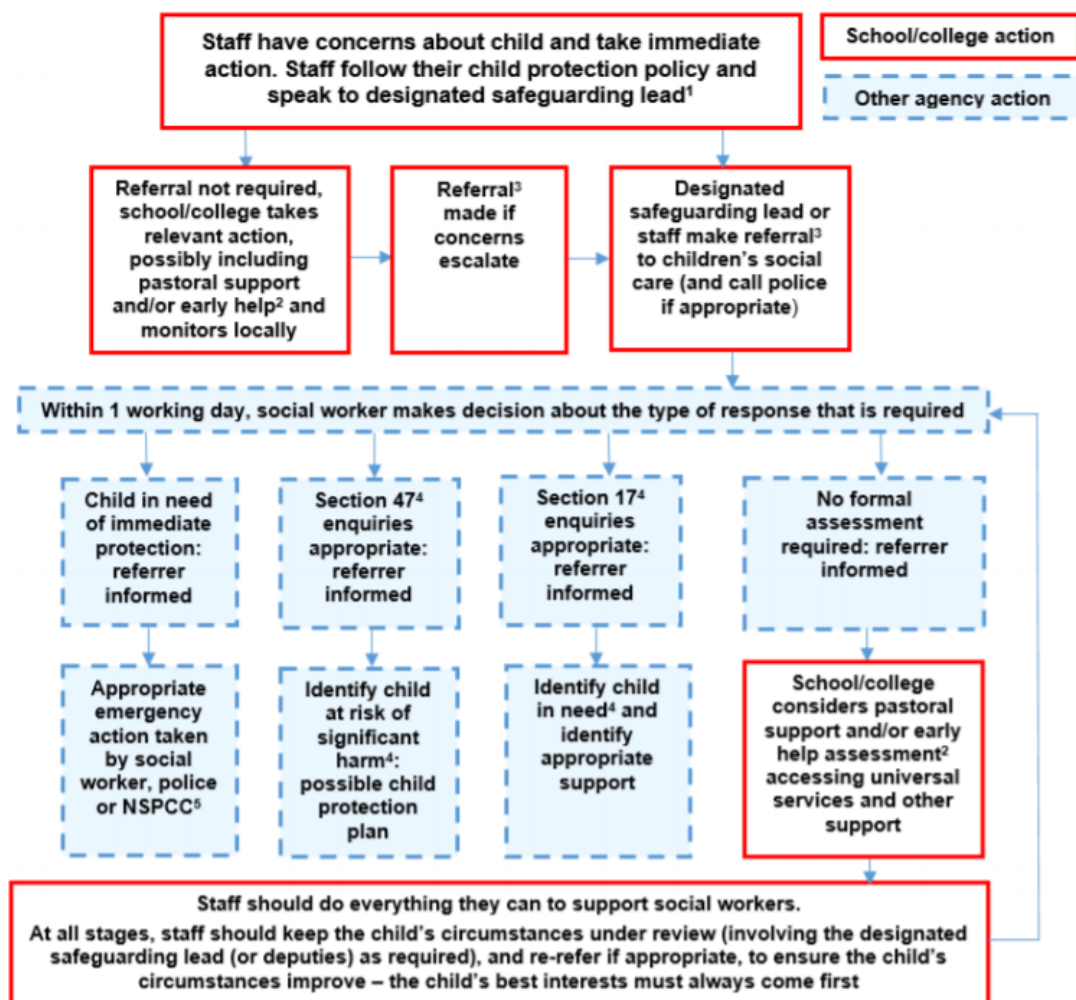
I know that all information around children should be kept confidential and should not be shared outside of school except with trusted agencies.

Signed _____

Date _____

APPENDIX 5: Actions where there are concerns about a child (Keeping Children Safe in Education 2021)

Actions where there are concerns about a child



APPENDIX 6: INDICATORS OF ABUSE AND NEGLECT

The framework for understanding children's needs:



In addition to the above, from Working Together to Safeguard Children (DfE 2015), refer to the latest [Thresholds and Pathways document](#)

[Working Together to Safeguard Children \(DfE, 2018\)](#)

Physical abuse	
<i>Physical abuse may involve hitting, shaking, throwing, poisoning, burning or scalding, drowning, suffocating or otherwise causing physical harm to a child.</i>	
Child	
Bruises – shape, grouping, site, repeat or multiple	Withdrawal from physical contact
Bite-marks – site and size	Aggression towards others, emotional and behaviour problems
Burns and Scalds – shape, definition, size, depth, scars	
Improbable, conflicting explanations for injuries or unexplained injuries	Frequently absent from school
Untreated injuries	Admission of punishment which appears excessive
Injuries on parts of body where accidental injury is unlikely	Fractures
Repeated or multiple injuries	Fabricated or induced illness
Parent	Family/environment
Parent with injuries	History of mental health, alcohol or drug misuse or domestic violence.
Evasive or aggressive towards child or others	Past history in the family of childhood abuse, self-harm, somatising disorder or false allegations of physical or sexual assault

Explanation inconsistent with injury	Marginalised or isolated by the community.
Fear of medical help / parents not seeking medical help	Physical or sexual assault or a culture of physical chastisement.
Over chastisement of child	

Emotional abuse	
<i>Emotional abuse is the persistent emotional maltreatment of a child such as to cause severe and persistent adverse effects on the child's emotional development. It may involve conveying to children that they are worthless or unloved, not giving the child opportunities to express their views, 'making fun' of what they say or how they communicate - hearing the ill-treatment of another and serious bullying (including cyber bullying).</i>	
Child	
Self-harm	Over-reaction to mistakes / Inappropriate emotional responses
Chronic running away	Abnormal or indiscriminate attachment
Drug/solvent abuse	Low self-esteem
Compulsive stealing	Extremes of passivity or aggression
Makes a disclosure	Social isolation – withdrawn, a 'loner' Frozen watchfulness particularly pre school
Developmental delay	Depression
Neurotic behaviour (e.g. rocking, hair twisting, thumb sucking)	Desperate attention-seeking behaviour
Parent	Family/environment
Observed to be aggressive towards child or others	Marginalised or isolated by the community.
Intensely involved with their children, never allowing anyone else to undertake their child's care.	History of mental health, alcohol or drug misuse or domestic violence.
Previous domestic violence	History of unexplained death, illness or multiple surgery in parents and/or siblings of the family
History of abuse or mental health problems	Past history in the care of childhood abuse, self harm, somatising disorder or false allegations of physical or sexual assault
Mental health, drug or alcohol difficulties	Wider parenting difficulties
Cold and unresponsive to the child's emotional needs	Physical or sexual assault or a culture of physical chastisement.
Overly critical of the child	Lack of support from family or social network.

Neglect	
<i>Neglect is the persistent failure to meet a child's basic physical and/or psychological needs, likely to result in the serious impairment of the child's health or development.</i>	
Child	
Failure to thrive - underweight, small stature	Low self-esteem
Dirty and unkempt condition	Inadequate social skills and poor socialisation
Inadequately clothed	Frequent lateness or non-attendance at school
Dry sparse hair	Abnormal voracious appetite at school or nursery
Untreated medical problems	Self-harming behaviour

Red/purple mottled skin, particularly on the hands and feet, seen in the winter due to cold	Constant tiredness
Swollen limbs with sores that are slow to heal, usually associated with cold injury	Disturbed peer relationships
Parent	Family/environment
Failure to meet the child's basic essential needs including health needs	Marginalised or isolated by the community.
Leaving a child alone	History of mental health, alcohol or drug misuse or domestic violence.
Failure to provide adequate caretakers	History of unexplained death, illness or multiple surgery in parents and/or siblings of the family
Keeping an unhygienic dangerous or hazardous home environment	Past history in the family of childhood abuse, self harm, somatising disorder or false allegations of physical or sexual assault
Unkempt presentation	Lack of opportunities for child to play and learn
Unable to meet child's emotional needs	Dangerous or hazardous home environment including failure to use home safety equipment; risk from animals
Mental health, alcohol or drug difficulties	
Sexual abuse	
<i>Sexual abuse involves forcing or enticing a child or young person to take part in sexual activities, not necessarily involving a high level of violence, whether or not the child is aware of what is happening. The activities may involve physical contact or non-contact activities, such as involving children in looking at sexual images or being groomed online / child exploitation.</i>	
Child	
Self-harm - eating disorders, self-mutilation and suicide attempts	Poor self-image, self-harm, self-hatred
Running away from home	Inappropriate sexualised conduct
Reluctant to undress for PE	Withdrawal, isolation or excessive worrying
Pregnancy	Sexual knowledge or behaviour inappropriate to age/stage of development, or that is unusually explicit
Inexplicable changes in behaviour, such as becoming aggressive or withdrawn	Poor attention/concentration (world of their own)
Pain, bleeding, bruising or itching in genital and /or anal area	Sudden changes in school work habits, become truant
Sexually exploited or indiscriminate choice of sexual partners	
Parent	Family/environment
History of sexual abuse	Marginalised or isolated by the community
Excessively interested in the child	History of mental health, alcohol or drug misuse or domestic violence
Parent displays inappropriate behaviour towards the child or other children	History of unexplained death, illness or multiple surgery in parents and/or siblings of the family
Conviction for sexual offences	Past history in the care of childhood abuse, self harm, somatising disorder or false allegations of physical or sexual assault
Comments made by the parent/carer about the child	Grooming behaviour
Lack of sexual boundaries	Physical or sexual assault or a culture of physical chastisement.

APPENDIX 7: DECLARATION ON MOBILE PHONES IN EYFS

Early Years Foundation Stage (EYFS) Policy for the use of Cameras and Mobile Phones

To ensure the safety and welfare of the children in our care this policy outlines the protocol for the use of personal mobile phones, laptops and cameras in the school.

- All staff must ensure that their mobile phones, personal cameras and recording devices are stored securely during working hours on school premises or when on outings. (This includes visitors, volunteers and students).
- Personal mobile phones must not be used in any teaching area, without the express permission of the SLT.
- Mobile phones **must not** be used near or in toilets or changing areas.
- Only school equipment should be used to record classroom activities. Photos should be put on the school system as soon as possible and not sent to or kept on personal devices.
- During school outings nominated staff will have access to a school mobile which can be used for emergency or contact purposes.
- All telephone contact with parents or carers must be made on the school phone and a note kept. Personal mobile phones should not be used.
- Parents or carers are permitted to take photographs of their own children during a school production or event. The school protocol requires that photos of other people's children are not published on social networking sites such as Facebook.
- Staff and parents are advised against the misuse of network sites such as Facebook and Twitter to share confidential or potentially negative or abusive comments or information regarding the school, a member of staff, parent or child.

APPENDIX 8: iMAT safeguarding proformas

All of our schools use MyConcern for reporting concerns. If for any reason you are unable to use the online system, the proformas below should be used to report concerns. Remember to **ALWAYS** speak with a DSL as well as sharing the information via a form.

SAFEGUARDING CHILDREN RECORD OF CONCERN FORM

Safeguarding children is a shared responsibility

Remember, if you are still left feeling unsure after you have spoken to a member of staff about your concerns, call the Multi Agency Safeguarding Hub on 03001261000.

Don't ask leading questions but capture as much as you can of what the child has said to you.

Name of child:

Date:

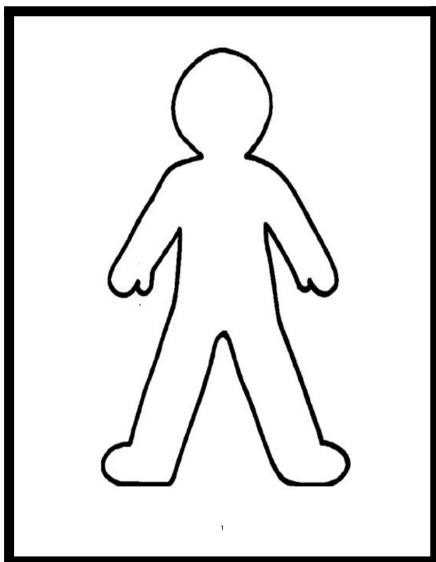
Page 1/

Time:

(attached additional pages as necessary)

Cause of Concern:

(Use image to record physical observations if necessary)



Signed:

Print Name:

Action:

SAFEGUARDING CHILDREN
A SHARED RESPONSIBILITY

Record of a meeting/ conversation with an agency/ professional

Child's name:

Agency/ professional:

Staff member:

Date:

Notes:

Further Actions (include date to be actioned and by whom)

**SAFEGUARDING CHILDREN
A SHARED RESPONSIBILITY**

Self-harming behaviours incident form

Child's name:

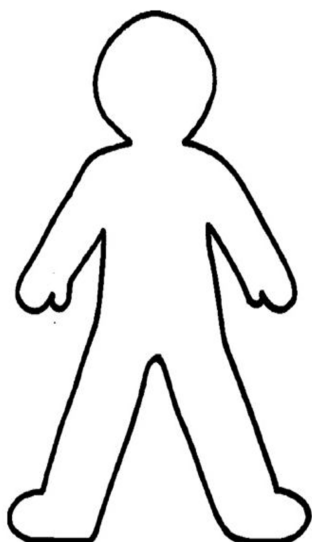
Date:

Number of previous reported incidents

Staff member:

Incident description:

(Mark on diagram where self-harming occurred)



Time and context of occurrence:

Action taken by school staff:

Was restraint necessary? Yes/No

If yes, record number in bound book _____

Parents informed? Yes/No

Record of a meeting/ telephone conversation with a parent

Child's name:

Parent/ carer:

Staff member completing form:

Date:

Time:

Notes regarding the discussion:

Further Actions (include date to be actioned and by whom)

Appendix 9: Contacts in the event of school closures

Keeping Safe and Healthy at Home Badby School

In the event of a school closure, we want to make sure that families continue to feel safe and happy. We are here to help and support in any way we can. Below is a list of contacts to help with varying needs. This list is not exhaustive. If there is a service you feel you require, please do not hesitate to contact one of the Designated Safeguarding Leads for our school via classdojo or the email address below

Designated Safeguarding Leads:
Ben Edge

Out of hours support for urgent safeguarding support call MASH advice line on 0300 1261000

Whilst at home it is important to keep yourself active and mentally engaged. Some helpful advice is always available from the following organisations:

Samaritans: Someone to listen 24/7 free of charge. Tel 116 123 or text 07725 909090
www.samaritans.org

Citizens Advice: free, confidential advice and information: Tel 0844 855 2122
www.citizensadvice.daventryanddistrict.co.uk

Daventry food bank: Tel 01327 577 851 www.daventryfoodbank.org.uk
You are able to refer yourselves or, if you prefer, school can refer you for this service.

Mind: Offer support and advice to empower anyone experiencing a mental health problem. Tel 0300 123 3393. www.mind.org.uk

Child line: Available for children to talk to a child line counsellor, no problem too big or small. Tel 0800 1111 www.childline.org.uk

Domestic Abuse National Helpline: Tel 0808 2000 247 www.womensaid.org.uk

Winstons wish: Helpline to support young people with the death of a loved one. 08088 020 021 www.winstonswish.org

NSPCC: Tel 0808 800 5000 www.nspcc.org.uk

Family Lives: for support and advice. Tel 0808 800 2222. www.familylives.org.uk

Keeping Safe and Healthy at Home

Kilsby School

In the event of a school closure, we want to make sure that families continue to feel safe and happy. We are here to help and support in any way we can. Below is a list of contacts to help with varying needs. This list is not exhaustive. If there is a service you feel you require, please do not hesitate to contact one of the Designated Safeguarding Leads for our school via classdojo or the email address below

Designated Safeguarding Leads:
Mrs Georgina Sensecall

Out of hours support for urgent safeguarding support call MASH advice line on 0300 1261000

Whilst at home it is important to keep yourself active and mentally engaged. Some helpful advice is always available from the following organisations:

Samaritans: Someone to listen 24/7 free of charge. Tel 116 123 or text 07725 909090
www.samaritans.org

Citizens Advice: free, confidential advice and information: Tel 0844 855 2122
www.citizensadvice.daventryanddistrict.co.uk

Daventry food bank: Tel 01327 577 851 www.daventryfoodbank.org.uk
You are able to refer yourselves or, if you prefer, school can refer you for this service.

Mind: Offer support and advice to empower anyone experiencing a mental health problem. Tel 0300 123 3393. www.mind.org.uk

Child line: Available for children to talk to a child line counsellor, no problem too big or small. Tel 0800 1111 www.childline.org.uk

Domestic Abuse National Helpline: Tel 0808 2000 247 www.womensaid.org.uk

Winstons wish: Helpline to support young people with the death of a loved one. 08088 020 021 www.winstonswish.org

NSPCC: Tel 0808 800 5000 www.nspcc.org.uk
Family Lives: for support and advice. Tel 0808 800 2222. www.familylives.org.uk

Keeping Safe and Healthy at Home

Weedon Bec Primary School

In the event of a school closure, we want to make sure that families continue to feel safe and happy. We are here to help and support in any way we can. Below is a list of contacts to help with varying needs. This list is not exhaustive. If there is a service you feel you require, please do not hesitate to contact one of the Designated Safeguarding Leads for our school via classdojo or the email address below

[Link to Weedon Bec School Safeguarding Flow](#)

Designated Safeguarding Leads:
Miss Jo Hatt

Out of hours support for urgent safeguarding support call MASH advice line on 0300 1261000

Whilst at home it is important to keep yourself active and mentally engaged. Some helpful advice is always available from the following organisations:

Samaritans: Someone to listen 24/7 free of charge. Tel 116 123 or text 07725 909090
www.samaritans.org

Citizens Advice: free, confidential advice and information: Tel 0844 855 2122
www.citizensadvice.daventryanddistrict.co.uk

Daventry food bank: Tel 01327 577 851 www.daventryfoodbank.org.uk
You are able to refer yourselves or, if you prefer, school can refer you for this service.

Mind: Offer support and advice to empower anyone experiencing a mental health problem. Tel 0300 123 3393. www.mind.org.uk

Child line: Available for children to talk to a child line counsellor, no problem too big or small. Tel 0800 1111 www.childline.org.uk

Domestic Abuse National Helpline: Tel 0808 2000 247 www.womensaid.org.uk

Winstons wish: Helpline to support young people with the death of a loved one. 08088 020 021 www.winstonswish.org

NSPCC: Tel 0808 800 5000 www.nspcc.org.uk
Family Lives: for support and advice. Tel 0808 800 2222. www.familylives.org.uk

Keeping Safe and Healthy at Home

Woodford Halse Academy

In the event of a school closure, we want to make sure that families continue to feel safe and happy. We are here to help and support in any way we can. Below is a list of contacts to help with varying needs. This list is not exhaustive. If there is a service you feel you require, please do not hesitate to contact one of the Designated Safeguarding Leads for our school via classdojo or the email address below

Designated Safeguarding Leads:
Miss Alison Crockford

Out of hours support for urgent safeguarding support call MASH advice line on 0300 1261000

Whilst at home it is important to keep yourself active and mentally engaged. Some helpful advice is always available from the following organisations:

Samaritans: Someone to listen 24/7 free of charge. Tel 116 123 or text 07725 909090
www.samaritans.org

Citizens Advice: free, confidential advice and information: Tel 0844 855 2122
www.citizensadvice.daventryanddistrict.co.uk

Daventry food bank: Tel 01327 577 851 www.daventryfoodbank.org.uk
You are able to refer yourselves or, if you prefer, school can refer you for this service.

Mind: Offer support and advice to empower anyone experiencing a mental health problem. Tel 0300 123 3393. www.mind.org.uk

Child line: Available for children to talk to a child line counsellor, no problem too big or small.
Tel 0800 1111 www.childline.org.uk

Domestic Abuse National Helpline: Tel 0808 2000 247 www.womensaid.org.uk

Winstons wish: Helpline to support young people with the death of a loved one.
08088 020 021 www.winstonswish.org

NSPCC: Tel 0808 800 5000 www.nspcc.org.uk
Family Lives: for support and advice. Tel 0808 800 2222. www.familylives.org.uk

Keeping Safe and Healthy at Home

Paulerspury CE Primary School

In the event of a school closure, we want to make sure that families continue to feel safe and happy. We are here to help and support in any way we can. Below is a list of contacts to help with varying needs. This list is not exhaustive. If there is a service you feel you require, please do not hesitate to contact one of the Designated Safeguarding Leads for our school via classdojo or the email address below

Designated Safeguarding Leads:
Mr Robin Bunting,

Out of hours support for urgent safeguarding support call MASH advice line on 0300 1261000

Whilst at home it is important to keep yourself active and mentally engaged. Some helpful advice is always available from the following organisations:

Samaritans: Someone to listen 24/7 free of charge. Tel 116 123 or text 07725 909090
www.samaritans.org

Citizens Advice: free, confidential advice and information: Tel 0844 855 2122
www.citizensadvice.daventryanddistrict.co.uk

Daventry food bank: Tel 01327 577 851 www.daventryfoodbank.org.uk
You are able to refer yourselves or, if you prefer, school can refer you for this service.

Mind: Offer support and advice to empower anyone experiencing a mental health problem. Tel 0300 123 3393. www.mind.org.uk

Child line: Available for children to talk to a child line counsellor, no problem too big or small.
Tel 0800 1111 www.childline.org.uk

Domestic Abuse National Helpline: Tel 0808 2000 247 www.womensaid.org.uk

Winstons wish: Helpline to support young people with the death of a loved one.
08088 020 021 www.winstonswish.org

NSPCC: Tel 0808 800 5000 www.nspcc.org.uk
Family Lives: for support and advice. Tel 0808 800 2222. www.familylives.org.uk

Keeping Safe and Healthy at Home

Rothersthorpe CE Primary School

In the event of a school closure, we want to make sure that families continue to feel safe and happy. We are here to help and support in any way we can. Below is a list of contacts to help with varying needs. This list is not exhaustive. If there is a service you feel you require, please do not hesitate to contact one of the Designated Safeguarding Leads for our school via the email address below

Designated Safeguarding Lead:
Mrs Nicola Fountain

Out of hours support for urgent safeguarding support call MASH advice line on 0300 1261000

Whilst at home it is important to keep yourself active and mentally engaged. Some helpful advice is always available from the following organisations:

Samaritans: Someone to listen 24/7 free of charge. Tel 116 123 or text 07725 909090
www.samaritans.org

Citizens Advice: free, confidential advice and information: Tel 0844 855 2122
www.citizensadvice.daventryanddistrict.co.uk

Daventry food bank: Tel 01327 577 851 www.daventryfoodbank.org.uk
You are able to refer yourselves or, if you prefer, school can refer you for this service.

Mind: Offer support and advice to empower anyone experiencing a mental health problem. Tel 0300 123 3393. www.mind.org.uk

Child line: Available for children to talk to a child line counsellor, no problem too big or small. Tel 0800 1111 www.childline.org.uk

Domestic Abuse National Helpline: Tel 0808 2000 247 www.womensaid.org.uk

Winstons wish: Helpline to support young people with the death of a loved one. 08088 020 021 www.winstonswish.org

NSPCC: Tel 0808 800 5000 www.nspcc.org.uk

Family Lives: for support and advice. Tel 0808 800 2222. www.familylives.org.uk

Appendix 10: Questions for safeguarding calls

